



WAIKĪKĪ IMPROVEMENT ASSOCIATION

Wikiwiki Wire

E-newsletter keeping you up-to-date on Waikīkī news, features, trends and more!



Contents

3
WAIKĪKĪ BEACH SPECIAL
IMPROVEMENT DISTRICT
ASSOCIATION - ANNUAL
MEETING MAY 18TH 4PM TO
5PM

4
EARTH DAY WAIKĪKĪ BEACH
CLEAN UP - MAHALO!

5
THE KUHIO BEACH HULA
SHOW

6
STREET ACTIVITY IN & NEAR
WAIKĪKĪ

MORE WAIKĪKĪ NEWS, EVENTS & FOOD

WAIKIKI COMMUNITY CENTER - GRANTS
FOR SENIORS DEADLINE MAY 15

HALEKULANI - MOTHER'S DAY BRUNCH
AND CONCERT WITH KAPENA

HALEPUNA - BED & BREAKFAST

HAWAI'I CONVENTION CENTER
WELCOMES EXECUTIVE CHEF BROOKE
TADENA

ATSUSHI GANAHA APPOINTED CHEF
DE CUISINE OF BALI OCEANFRONT AT
HILTON HAWAIIAN VILLAGE

MOTHER'S DAY AT HYATT REGENCY
WAIKIKI BEACH RESORT & SPA

WHAT'S NEW THIS SPRING AT
INTERNATIONAL MARKET PLACE

FOOD GURUS HAWAII

COME TOGETHER FOR MOTHER'S DAY AT
WAIKIKI BEACH WALK

GET A TASTE OF THE BEST RESTAURANTS
IN WAIKIKI AT THE WAIKIKI SHOPPING
PLAZA

SPIN TO WIN AND CELEBRATE MOM IN
STYLE AT ROYAL HAWAIIAN CENTER

Waikiki Beach Special Improvement District Association

ANNUAL MEETING MAY 18TH 4PM TO 5PM

The Waikīkī Beach Special Improvement District Association (WBSIDA) is planning the annual membership meeting for May 18th, 2023 from 4:00pm to 5:00pm.

This meeting will be held virtually via a Zoom Webinar and is for members of the WBSIDA. The annual meeting serves as a forum for members, and other interested parties to participate and learn more about the plans for the future. The active members of the WBSIDA will have an opportunity to vote on specific agenda



items up for action such as Board of Directors elections, operating budget and a new assessment rate.

During the annual meeting, the WBSIDA's President Rick Egged, will report on the financial performance, beach improvement projects planned, along with proposed 2023-24 operating budget, new assessment rate and future plans. The annual meeting provides an opportunity for stakeholders to ask questions, provide feedback, and share their thoughts on the nonprofit's goals and priorities for the upcoming year. This feedback can be valuable in shaping the WBSIDA's strategy and ensuring that it remains accountable to its mission and stakeholders. Overall, the purpose of the annual meeting is to promote transparency, accountability, and engagement among the organization's stakeholders and ensure that the nonprofit continues to serve its mission effectively. If you are interested in becoming a Class B (tenant) member please visit our website for more details, there is no fee to join www.wbsida.org/wbsida-membership.

The WBSIDA Annual Meeting agenda includes:

- WBSIDA President's Report
- 2023-24 Budget for approval
- 2023-24 New assessment rate for approval
- 2023-26 Board of Directors elections
- Waikiki Beach improvement projects
- Dr. Chip Fletcher, presentation on Sea-Level Rise Impacts in Waikīkī.

(Interim Dean of University of Hawai'i, School of Ocean and Earth Science and Technology)

Earth Day Waikiki Beach Clean up!

MAHALO TO THE WAIKĪKĪ OHANA WORKFORCE. . .
MADE OF UP MEMBERS OF THE WAIKĪKĪ IMPROVEMENT ASSOCIATION, WHO
TURNED UP IN FORCE ON APRIL 22, 2023 IN HONOR OF

Earth Day

OVER 265 VOLUNTEERS GATHERED TO PICK UP TRASH ON WAIKĪKĪ BEACH.



MAHALO TO OUR SPONSORS

Hyatt Regency Waikiki
ABC Stores
Hilton Hawaiian Village
Enoa Corporation
Polynesian Adventure Tours
Royal Star Hawai'i
Bank of Hawai'i
HPD D6
Halekūlani
Hawaiian Building Maintenance



Outrigger Hospitality Group
Highgate Hotels
Sheraton Princess Ka'iulani
Waikiki Beach Marriott Resort
Honolulu Cookie Company
Moana Surfrider Hotel
Central Pacific Bank
Lili'uokalani Trust Club
Wyndham at Waikiki Beach Walk
Prince Waikikiki

Kūhiō Beach Hula Show

Authentic Hawaiian music and hula by Hawaii's finest Halau Hula (dance troupes) and Hawaiian performers. Opens with traditional blowing of conch shell.

TUESDAYS AND SATURDAYS, 6:30-7:30 PM, WEATHER-PERMITTING

Presented by Oahu Visitors Bureau, Hawaii Tourism Authority, City & County of Honolulu and Waikiki Improvement Association.

LAST SUNDAY OF THE MONTH, 6:30 - 7:30 PM, WEATHER-PERMITTING

Presented by Hyatt Regency Waikīkī, City and County of Honolulu and the Waikīkī Improvement Association.

DETAILS

- Located on the beachside of Kalakaua Avenue near the Duke Kahanamoku Statue, diagonally across from the Hyatt Regency hotel.
- Free, outdoors, casual, seating on the grass; beach chairs, mats, etc. okay. Cameras welcomed.
- No show if parades or street fairs are scheduled.

For information, call 808-843-8002.



STREET ACTIVITY

IN AND NEAR WAIKĪKĪ (COURTESY OF THE CITY)

44th ANNUAL VISITOR INDUSTRY CHARITY WALK SATURDAY, MAY 6, 2023

6:00 AM Road Closes | 12:00 PM Road Reopens (Approximate)

44th ANNUAL VISITOR INDUSTRY CHARITY WALK sponsored by Hawaii Hotel Industry Assn. The event will have 3,000 + runners/walkers. It will start at Ala Moana Park's McCoy Pavilion Key Hole area, clockwise around Ala Moana Park, to Ala Moana Blvd., mauka sidewalk area, to Ala Wai Promenade area, to Kalakaua Ave., makai side, crossover to mauka side sidewalk at King Kalakaua Park, to cross Kalakaua Ave. at Seaside Ave. to turnaround at Ohua Ave., to Kalakaua Ave. makai side ewa bound direction, to Lewers St., to Kalia Rd., to Ala Moana Blvd., to end at Ala Moana Park's McCoy Pavilion Key Hole area. Contact: Jared Higashi 923-0407 Fax: 924-3843 E-mail: jhigashi@hawaiilodging.org For more info, visit their website:<http://www.charitywalkhawaii.org>

HIBISCUS HALF MARATHON SUNDAY, MAY 28, 2023

3:30 AM Lanes Close | 9:00 AM Lanes Reopen (Approximate)

HIBISCUS HALF MARATHON sponsored by Tropical Triple Crown Charitable Racing and Road Runners Club of America. The event is expected to have 900 runners. It will start at Kapiolani Park, to Kalakaua Ave., to Monsarrat Ave., to Paki Ave., to Diamond Hd. Rd., to 18th Ave., to Kilauea Ave., to Waiialae Ave., to Kalaniana'ole Hwy., to Kealaolu Ave., to Kahala Ave., to Diamond Hd. Rd., to Kalakaua Ave., to end at Honolulu Marathon Finish line. Contact: Jen McVeay 348-0634, E-mail: tropicaltriplecrown@gmail.com For further info, check their website: www.tropicaltriplecrown.com.



Proudly Serving the Waikiki Community Since 1978

310 Paoakalani Avenue • Honolulu, HI 96815
808 923-1802 • www.waikikicommunitycenter.org



Check out all that's happening at WCC!

Photo: Genki ball making/throwing with WCC kupuna, keiki, Kapiolani Community College & Genki Ala Wai Project

#StongerTogether

Grants for Seniors

Waikiki Community Center has funds to provide financial support for medical, health, housing, transportation and care giving costs such as rent, medical co-pays, dental bills, glasses, home health care, and other qualifying expenses.

Deadline to request for assistance is May 15, 2023, or when funds are depleted, whichever is first.

Up to \$500 in financial assistance*

- 70+ years old
- in financial need
- Hawaii Resident

*Payments made directly to vendors.



For more information

Shaun Stone, Senior Assistance Manager
sstone@waikikicommunitycenter.org
808-923-1802, ext. 106



Halekulani
On the Beach at Waikiki

Mother's Day Brunch & Concert with Kapena

Enjoy the music of award-winning Kapena in our Halekulani Ballroom for a special brunch & concert on Mother's Day!

Two seatings: 9:30 am & 12:30 pm. A complimentary mimosa, long stemmed rose, and a SpaHalekulani gift will be provided to all mothers and grandmothers who attend the event.

For more information or to reserve seats at either event, please call 808-518-2019.



Art of Wellbeing Promotion - May

May 13 – Dream Interpretation

Learn how to identify the various elements of a dream and what our subconscious mind might be communicating.

In celebration of Mother's Day....

Enjoy a complimentary paraffin wax treatment with your Essential Pedicure at SpaHalekulani between May 12 – 14.

Please call 808-931-5322 for more information and to make a reservation.



Nightcap at Lewers Lounge

Lewers Lounge features some of the best world class musicians. With easy to share plates and an arrangement of curated cocktails, including several bespoke low and non-alcoholic drinks, see why many are calling our sophisticated jazz bar "one of Waikiki's best kept secrets."

Tuesday to Thursday from 7:00 pm to 12:00 am

Friday & Saturday from 7:00 pm to 12:30 am.





Bed & Breakfast

Enjoy a wonderful start to your day with daily breakfast for two at UMI by Vikram Garg when reserving a room on this special package.
For more information, please contact reservations@halepuna.com.



Halekulani Bakery

See what kind of surprises we have in store for May...Cookie Lei for Lei Day and Koi Fish for Boy's Day. Don't forget Mother's Day – preorder your Halekulani Coconut Cake!

While you are here, be sure to try our Chocolate Croissant and which pairs nicely with a fresh cup of coffee!

Thursday – Sunday from 6:30 am to 11:30 am



UMI by Vikram Garg is OPEN!

Oahu's most anticipated new restaurant, *UMI by Vikram Garg*, has opened for breakfast. Offering celebrated dishes from around the world and original favorites such as *The Mai Tai Pancake, with a Caramelized Pineapple and Rum-Coconut Essence*. Chef Garg's immersive dinner experience called the "Ocean's Harvest," debuts on Mother's Day, May 14th.

Daily: Walk-ins welcome
Breakfast 7:00 am to 11:00 am
Dinner (starting May 14) 5:00 pm to 10:00 pm
Attire: Smart Casual

www.umibyvikramgarg | (808) 744-4244 | @umi_vikramgarg



Hawai'i Convention Center Welcomes Executive Chef Brooke Tadena

Tadena has more than a decade of culinary leadership experience, most recently serving as executive sous chef at the Hilton Hawaiian Village since 2014. As a senior chef at the resort, he was responsible for budgeting, staffing and working in coordination with Hilton partner properties. He previously served as an executive sous chef at Moana Surfrider, A Westin Resort & Spa, and as a banquet chef at the Hilton Hawaiian Village.

In addition to overseeing some of the state's largest banquet facilities, Tadena's experience spans scheduling, training staff for fine service and food preparation, and the organization of large-scale food and wine events.

He earned his associate degree in occupational studies from the Culinary Institute of America in New York and attended Kapiolani Community College in Honolulu.

The Center, which is home to a 20,000-square-foot kitchen and the 1801 Café, offers innovative and customizable dining options for guests, ranging from aloha-inspired luncheons to completely immersive dining experiences.

Na Leo Pilimehana to Perform Mother's Day Concert, Joined by Josh Tatofi

The Hawai'i Convention Center invites guests to a special Mother's Day brunch concert featuring Na Leo Pilimehana at its 4th floor Kalākaua Ballroom on Sunday, May 14, 2023.

With 23 Na Hoku Hanohano Awards, Na Leo, consisting of three childhood friends – Nalani Jenkins, Lehua Kalima and Angela Morales-Escontria, has written, recorded and performed over 20 No. 1 hits. Na Leo will be joined by special guest Na Hoku Hanohano Award winner Josh Tatofi.

General admission non-reserved seating is \$65 per person. Brunch tickets, including a delicious brunch buffet from the Center's Executive Chef Brooke Tadena, start at \$110 per adult and \$80 per child (3-11 years old) including reserved seating; tables of 10 are \$1,000.

Guests are also welcome to send in a special written, photo or video message to Mom to be shown during the concert. The top three submissions will win a special prize.



For additional information, brunch menu, and to purchase tickets, visit HawaiiConvention.com.

Atsushi Ganaha Appointed Chef De Cuisine of Bali Oceanfront at Hilton Hawaiian Village

Hilton Hawaiian Village Waikiki Beach Resort has appointed Atsushi Ganaha as the new chef de cuisine of Bali Oceanfront, the resort's premier restaurant. Ganaha brings a wealth of experience with him, having worked in various culinary leadership positions for more than 25 years.

As chef de cuisine, Ganaha will be responsible for overseeing kitchen operations at Bali Oceanfront, including managing the staff, developing new menus, and ensuring the quality and consistency of the restaurant's dishes. With a comprehensive knowledge of international cuisine styles, including Japanese, Sushi, Yakitori, French, Italian, Chinese, Caribbean, and Latin, Ganaha will lead an exciting revamp of the restaurant's menu offerings.



Most recently, Ganaha served as the executive chef at Torien, a Michelin-starred yakitori and omakase-style restaurant in New York City. In that role, he oversaw the hiring, training, and supervision of kitchen staff and introduced new culinary techniques to the restaurant. Prior to Torien, Ganaha was the chef de cuisine at Oya NY, where he oversaw daily prep, kitchen staff, and menu conception and execution.

Ganaha studied the culinary arts at the Oda Culinary School in Nakano-Ku, Tokyo, Japan.

"We are thrilled to welcome Chef Atsushi Ganaha to our culinary team at Hilton Hawaiian Village Waikiki Beach Resort," said Debi Bishop, managing director of Hilton Hawaiian Village Waikiki Beach Resort. "With his extensive experience and passion for international cuisine, we are confident that he will elevate the dining experience at Bali Oceanfront and continue to exceed the expectations of our guests."

A Waikiki establishment and the longest running AAA Four Diamond-awarded restaurant in Hawaii, Bali Oceanfront welcomes guests in a bright, crisp, open-air environment. The main restaurant overlooks Waikiki's widest stretch of beach, while the Lagoon Terrace area boasts views overlooking Duke Kahanamoku Lagoon and provides the perfect venue to catch a Waikiki sunset.



MOTHER'S DAY AT HYATT REGENCY WAIKIKI BEACH RESORT & SPA

SHOR's Brunch Buffet with a build your own signature mimosa

HONOLULU, HI (April 20, 2023) – Give your Mom the best gift at SHOR's Mother's Day Brunch Buffet. With over four stations to enjoy, this decadent spread highlights the very best of a mother's taste, including a Bubbly Bar for mixing your own signature mimosa with SHOR's premium tropical mixers, available only with bottle purchase of champagne or sparkling wine.

Mother's Day Brunch Buffet is \$89 per person and \$39 per child, 6-12. Reservations highly recommended due to limited spacing, visit OpenTable.

WHEN: Sunday, May 14th, 2023, 10am – 2pm
WHERE: SHOR Restaurant, located 3rd at the Hyatt Regency Waikiki Beach Resort & Spa

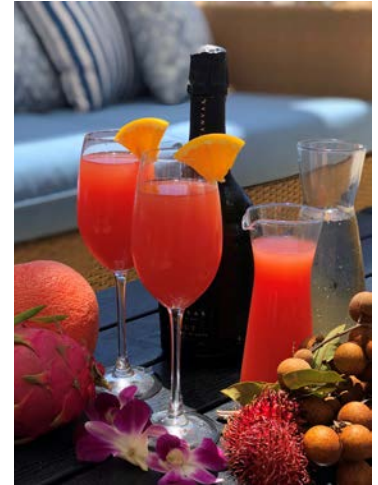


Image Credit: Hyatt Regency Waikiki Beach Resort & Spa

About Hyatt Regency Waikiki Beach Resort & Spa

Balanced between the idyllic beauty of the legendary Waikiki Beach and the dynamic city center, Hyatt Regency Waikiki Beach Resort & Spa is a vibrant destination combining relaxation and adventure with Hawaiian hospitality. Each of the 1,230 guestrooms, including 19 suites, offers Hawaiian elegance and private lanai with panoramic ocean, mountain, and city views. With an unrivaled location just steps from world-famous waves, the resort affords effortless exploration of the island's attractions from Diamond Head Crater, Honolulu Zoo, and Waikiki Aquarium, to world-class shopping, sophisticated dining, and expert surfing lessons. Offering endless amenities including luxurious treatments at the 10,000 square foot Na Ho'ola Spa, StayFit Fitness Center, locally sourced ingredients at SWIM bar & restaurant and SHOR restaurant, and specialty boutiques on-site at Pualeilani Atrium Shops.

For more information regarding Hyatt Regency Waikiki Beach Resort and Spa, please contact the resort by phone at (808) 923-1234 or visit the resort website at: <http://www.hyattregencywaikiki.com/>.

About Hyatt Regency

Hyatt Regency offers a full range of services and facilities tailored to serve the needs of meeting planners, business travelers and leisure guests. Properties range in size from 180 to over 2,000 rooms and are conveniently located in urban, suburban, airport, convention and resort destinations around the world. Hyatt Regency convention hotels feature spacious meeting and conference facilities designed to provide a productive environment allowing guests to convene and connect. Hyatt Regency hotels in resort locations cater to couples seeking a getaway, families enjoying a vacation together and corporate groups seeking a functional and relaxed atmosphere in which to conduct business and meetings.

INTERNATIONAL MARKET PLACE

What's New this Spring at International Market Place



[International Market Place](#) continues to expand its offerings by opening new stores, hosting unique, interactive events and showcasing authentic cultural entertainment. It's the ideal place to shop, dine and play in the heart of Waikiki.

Spring Into Brunch

From now through June, the Grand Lānai eateries at International Market Place are hosting “Spring into Brunch” every Saturday and Sunday. The menus include innovative and traditional selections, providing unmatched variety to those seeking weekend enjoyment in a beautiful, relaxing location. The Grand Lānai outlets offering Saturday and Sunday brunch include **Eating House 1849, Herringbone, Liliha Bakery, Crackin’ Kitchen,** and **Shorefyre**. **Moani Waikiki** offers brunch on Sundays.

Starting **May 6, Herringbone** will host live brunch entertainment with some of Oahu’s most popular DJs from 11 a.m. – 2 p.m. every Saturday. They will also offer mimosa deals at \$22 a bottle or \$5 a glass with free accompaniments of juices. Brunch Details:

<https://shopinternationalmarketplace.com/pages/brunch>

SPAM Jam Festival

Celebrating Hawaii’s unique love for SPAM, the annual Waikiki SPAM JAM festival highlights creative SPAM preparations at restaurants and events throughout Waikiki. Many of International Market Place’s restaurants participate with creative concoctions. International Market Place restaurants will offer unique SPAM dishes from **April 30 to May 14**, including **Crackin’ Kitchen, Eating House 1849, Hashi & Spoon, Liliha Bakery, Mitsuwa Marketplace** and **Moani Waikiki**.

O Nā Lani Sunset Stories Hula Show – New Time

The high-energy show, O Nā Lani Sunset Stories, will now start at **7 p.m.** (previously 6:30 p.m.) until the end of August. The show honors International Market Place’s rich history and sense of place through Hawaiian and Polynesian song and dance. The performance begins at sunset with the ceremonial lighting of the Lamakū Torch Tower on Kalākaua Avenue then proceeds to the Level 1 Queen’s Court stage. O Nā Lani Sunset Stories can be seen every **Monday, Wednesday** and **Friday** at **7 p.m.** The entertainment is free to the public.

New Store Opening - Lids

Lids is the world's largest retailer specializing in the sale of officially licensed and branded headwear. Every store offers a vast assortment of college, MLB, NBA, NFL and NHL teams, as well as many specialty fashion categories, all in the latest styles and colors. Open daily from **11 a.m. to 9 p.m.**

Ongoing Events

International Market Place offers an array of events each month. From free fitness classes to the Mahiku Farmers Market to Hawaiian style entertainment and music, there is something for everyone to enjoy. Visit the events page at <https://shopinternationalmarketplace.com/events/>.



fg

FOOD GURUS
HAWAII

We Move Brands Off Shelves & Into Hearts

Food Gurus is Hawaii's Food & Beverage Marketing Specialist.
One -Stop Comprehensive Creative, Digital, Marketing &
Publicity Customized Solutions.



foodgurususa.com

Contact us for a free consultation
Doug Harris - doug@digivortex.com | (808) 946-4626



WAIKIKI
BEACH WALK. NEWS, NOTES & HAPPENINGS from Waikiki Beach Walk

Comingupcoming

COME TOGETHER FOR MOTHER'S DAY AT WAIKIKI BEACH WALK



Mothers deserve appreciation all year long, and for the dedicated day that comes once a year, [Waikiki Beach Walk](#) has everything needed this Mother's Day to show Mom just how much she means to you. Whether you're searching for a gift she'll love or a way to spend some quality time together, the center is home to some of Hawaii's greatest unique shopping experiences, award-winning restaurants and world-renowned entertainment.

Looking for the perfect gift? Waikiki Beach Walk is home to a collection of locally owned stores that offer island inspired apparel such as exclusively designed resort wear from [Blue Ginger](#), French and Polynesian design fusion at [Coco Mango](#), or trendy streetwear from [Mahina](#).

In addition to a new outfit, a woman can never have too much jewelry. Add to Mom's collection by shopping at jewelry stores with one-of-a-kind pieces at [Kolohe](#) and [Na Hoku](#). A wide variety of other gifts can be found at more local stores like tasty treats from [Honolulu Cookie Company](#), a sustainable eco-swap from [Keep It Simple](#) or island-inspired décor from [SoHa Living](#).

Quality time is truly a mother's favorite gift. Spend an evening dining out at some of Waikiki Beach Walk's finest restaurants like [Roy's Waikiki](#), [Ruth's Chris Steak House](#), or [Taormina Sicilian Cuisine](#). After dinner, take a journey to experience the beautiful artwork displayed at [Wyland Galleries](#) or [Park West Fine Art Museum & Gallery](#), or treat her to a refreshing day of pampering at [Hele Mai Salon](#).

Share the joy of music together at May's **Mele Hali'a**, when Waikiki Beach Walk presents the finest in Hawaiian musical entertainment by some of Hawaii's most exceptional, award-winning artists. This month's performance will be **Sunday, May 21** from **5 to 6 p.m.** showcasing hula performances by **Halau Ka Lehua Tuahine** lead by **Kumu Hula Hiwa Vaughan-Darval**. Kumu Hula Ka'iliihiwa Vaughan-Darval is only one of five women in the history of hula to hold both of hula's most coveted titles, Miss Keiki Hula and Miss Aloha Hula. Her halau, Halau Hula Ka Lehua Tuahine placed 5th in the Wahine 'Auana category in the recently-concluded Merrie Monarch Festival.

WAIKIKI BEACH WALK • 226/227 Lewers St. Waikiki. Open Daily. www.waikikibeachwalk.com

Get a taste of the best restaurants in Waikīkī at

the Waikiki

SHOPPING PLAZA



Buho Cantina - Royal Lobster - Sky Waikiki
Starbucks - STIX ASIA - Tanaka of Tokyo

Parking Lot and Building Hours: 6:30am - 12am
2250 Kalakaua Ave, Honolulu, HI 96815
waikikishoppingplaza.com/dining

Spin to Win and Celebrate Mom in Style at Royal Hawaiian Center



Golden Week Spin to Win

APRIL 29 - MAY 7, 2023 | 11AM - 8PM
AT HELUMOA HALE GUEST SERVICES

Celebrate Golden Week at Royal Hawaiian Center with a chance to win big! Shop and spend \$300 or more at Royal Hawaiian Center between April 29 and May 7, 2023, and win amazing prizes by spinning the Royal Prize Wheel at Helumoa Hale Guest Services. This exciting Lucky Spin promotion includes gift cards, logo items, and other prizes from participating merchants.

Don't miss out on this opportunity to shop in style and win big at Royal Hawaiian Center during Golden Week!

To learn more, visit www.royalhawaiiancenter.com/events/2023-golden-week-lucky-spin.

Mother's Day Giveaway

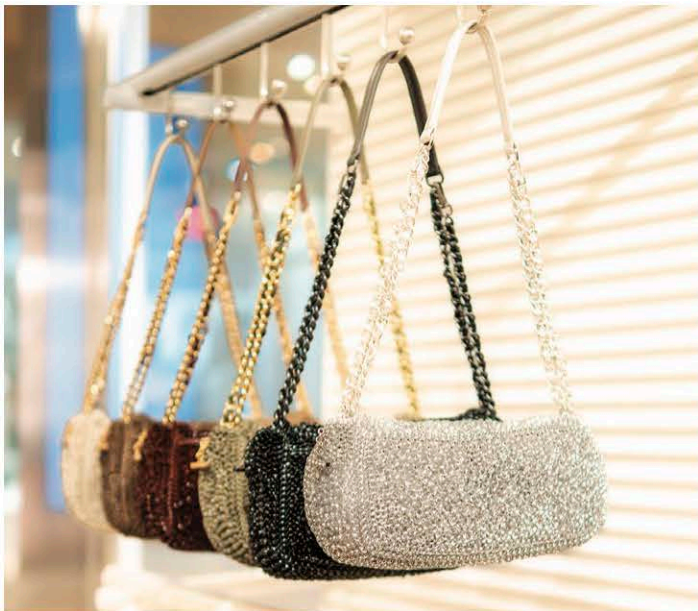
MAY 1- 13, 2023

Enter for a chance to WIN an unforgettable Mother's Day brunch at Wolfgang's in addition to a \$500 RHC gift card. Starting on May 1 and running through May 13, the center will hold a social media giveaway with winners announced on May 14, 2023.

To enter, participants simply need to follow @RoyalHwnCtr, like the post (going live on May 1), and comment/tag their mom and friends who they would like to invite to the brunch.

To learn more, follow @RoyalHwnCtr on Instagram and Facebook.





NEW SPRING ARRIVALS:

ANTEPRIMA, Signature by the Kahala, and L&L Hawaiian Barbecue

Royal Hawaiian Center is thrilled to announce the arrival of three new merchants this spring, each offering something special. **ANTEPRIMA** has opened its doors, showcasing its collection of elegant clothing and accessories for the modern, minimalistic woman. **Signature by The Kahala** opened on April 26th, featuring an exclusive retail line of gourmet gifts and souvenirs from the luxury resort. And **L&L Hawaiian Barbecue** opening its first Waikiki location at Royal Hawaiian Center early May, serving up mouth-watering Hawai'i favorites at affordable prices. Step into spring with Royal Hawaiian Center's three new must-visit merchants!



For more information, please visit
www.royalhawaiiancenter.com/shopping/

For a full list of events, visit
www.royalhawaiiancenter.com/events.



For updates on new stores and restaurants, follow us on social media ([@royalhwncr](https://www.instagram.com/royalhwncr)) or visit our website at www.royalhawaiiancenter.com.

Kama'āina & Military Parking

Looking for a hassle-free shopping experience this Mother's Day?

Royal Hawaiian Center offers an impressive parking program designed for local residents and military members. This promotion allows guests to receive three hours of validated parking for free after making a minimum purchase of \$10 from any of the center's stores or restaurants. After the three hours, standard parking rates will apply. To qualify for this offer, guests must redeem their validations at the Helumoa Hale Guest Services desk between 11am and 8pm daily with same-day receipt(s) totaling \$10 or more and a valid Hawai'i State I.D., driver's license, or military I.D. Take all the time you need to find the perfect gift for Mom With Royal Hawaiian Center's fantastic parking program.



MAY

MEI 2023 | HELU 'UMIKUMĀWALU



Complimentary Cultural Programming

LĀ PULE SUNDAY	PŌ'AKAHI MONDAY	PŌ'ALUA TUESDAY	PŌ'AKOLU WEDNESDAY	PŌ'AHĀ THURSDAY	PŌ'ALIMA FRIDAY	PŌ'AONO SATURDAY
	1 11AM - 12PM G1 'Ukulele Lesson 1PM, 2PM, 3PM G1 Lei Making Lessons & Hawaiian Music Performances	2 11AM - 12PM G1 Hula Lesson 5:30 PM - 6:30PM G1 Kawika Trask Trio Performance	3 11AM - 12PM C2 Lauhala Lesson 5:30 PM - 6:30PM G1 Pu'uhonua Performance	4 11AM G1 Keiki Hula Lesson 5:30PM - 6:30PM G1 Pu'uhonua Performance	5 12PM - 1PM C2 Lei Making Lesson 5:30 PM - 6:30PM G1 Malu Productions Performance	6 3:30 PM - 4:30PM G1 Keiki Hula Performance 5:30 PM - 6:30PM G1 Hula Kahiko Performance
7	8 11AM - 12PM G1 'Ukulele Lesson	9 11AM - 12PM G1 Hula Lesson 5:30 PM - 6:30PM G1 Kawika Trask Trio Performance	10 11AM - 12PM C2 Lauhala Lesson 5:30 PM - 6:30PM G1 Pu'uhonua Performance	11 11PM G1 Keiki Hula Lesson 5:30PM - 6:30PM G1 Pu'uhonua Performance	12 12PM - 1PM C2 Lei Making Lesson 5:30 PM - 6:30PM G1 Malu Productions Performance	13 3:30 PM - 4:30PM G1 Keiki Hula Performance 5:30 PM - 6:30PM G1 Hula Kahiko Performance
14	15 11AM - 12PM G1 'Ukulele Lesson	16 11AM - 12PM G1 Hula Lesson 5:30 PM - 6:30PM G1 Kawika Trask Trio Performance	17 11AM - 12PM C2 Lauhala Lesson 5:30 PM - 6:30PM G1 Pu'uhonua Performance	18 11PM G1 Keiki Hula Lesson 5:30PM - 6:30PM G1 Pu'uhonua Performance	19 12PM - 1PM C2 Lei Making Lesson 5:30 PM - 6:30PM G1 Malu Productions Performance	20 3:30 PM - 4:30PM G1 Keiki Hula Performance 5:30 PM - 6:30PM G1 Hula Kahiko Performance
20	21 11AM - 12PM G1 'Ukulele Lesson	22 11AM - 12PM G1 Hula Lesson 5:30 PM - 6:30PM G1 Kawika Trask Trio Performance	24 11AM - 12PM C2 Lauhala Lesson 5:30 PM - 6:30PM G1 Pu'uhonua Performance	25 11PM G1 Keiki Hula Lesson 5:30PM - 6:30PM G1 Pu'uhonua Performance	26 12PM - 1PM C2 Lei Making Lesson 5:30 PM - 6:30PM G1 Malu Productions Performance	27 3:30 PM - 4:30PM G1 Keiki Hula Performance 5:30 PM - 6:30PM G1 Hula Kahiko Performance
28	29 11AM - 12PM G1 'Ukulele Lesson	30 11AM - 12PM G1 Hula Lesson 5:30 PM - 6:30PM G1 Kawika Trask Trio Performance	31 11AM - 12PM C2 Lauhala Lesson 5:30 PM - 6:30PM G1 Pu'uhonua Performance		LOCAL INFORMATION A3: Building A, 3rd Floor C2: Building C, 2nd Floor G1: The Grove Stage HH: Helumoa Hale For more information, call Helumoa Hale Guest Services. (808 922-2299)	

All programming is subject to change or cancellation. Contact Helumoa Hale Guest Services at 808.922.2299 or text us at 808.425.9088 for the latest information. Standard parking rates apply.



WAIKĪKĪ IMPROVEMENT ASSOCIATION

Wikiwiki Wire is published on the first Monday of each month. If you would like to share your news with other members, please send your info to: editor@waikikiimprovement.com.

Submission Deadline

Waikīkī-related news and information submitted by members (or their PR agencies) for the Wikiwiki Wire newsletter should be received no later than **5 PM MONDAY, ONE WEEK PRIOR** to the newsletter's publication and distribution on the first Monday of each month.

News & Stories: Please submit any Waikīkī-related stories/articles as a Word doc and include photos to accompany stories/ articles. For best results, please upload photos as a separate JPEG attachment - maximum 2 MB each image.

Flyers/PDFs: Waikīkī-related flyers are welcome but must look like advertising flyers and not press releases. Please format flyers to an 8.5" x 11" size and submit them in a PDF format.

Press Releases: Please submit Waikīkī-related press releases as a Word doc. Press Releases that do not fit within one page of the Wikiwiki Wire newsletter will be returned for editing.

Photos: For best results, please upload photos as a separate JPEG attachment - maximum 2 MB each image.



WAIKĪKĪ IMPROVEMENT ASSOCIATION

We are a cross-section of business, government and the community; our members care about the future of this special place - Waikīkī.

For more than 40 years, the Waikiki Improvement Association has remained true to its objective: to improve, enrich and beautify Waikīkī for the benefit of residents and visitors alike and to promote conditions conducive to the economic and cultural good and for the betterment of the entire community.

HAWAIIAN DIACRITICAL MARKS

Waikīkī Improvement Association recognizes the use of diacritical marks (i.e., glottal stop (ʻ), macron (ā) in place names of Hawaiʻi, such as Waikīkī and Kalākaua Avenue and will include them whenever possible. We also respect the individual use (or not) of these markings for names of organizations and businesses.

There will also be times when we may not have a chance to add or change the markings in all of the articles submitted and when that happens, e kala mai.