



WAIKĪKĪ IMPROVEMENT ASSOCIATION

# *Wikiwiki Wire*

*E-newsletter keeping you up-to-date on Waikīkī news, features, trends and more!*



# Contents

3

**WAIKĪKĪ BEACH MAINTENANCE PLANNED FOR FEBRUARY 2021**

5

**ENVIRONMENTAL IMPACTS STATEMENT DOCUMENT RELEASED FOR WAIKĪKĪ BEACH IMPROVMENTS**

7

**WAIKĪKĪ STREET ACTIVITIES CANCELLED UNTIL FURTHER NOTICE**

## **MORE WAIKĪKĪ FOOD, NEWS & EVENTS**

BASALT HAPPY HOUR

ISLAND COUNTRY MARKETS

HAWAI'I CONVENTION CENTER

HYATT REGENCY KAMA'AINA PACKAGE

WAIKIKI BEACH WALK: TALK STORY

NEW YEAR GOOD FORTUNE AND GREAT DEALS AT ROYAL HAWAIIAN CENTER

TANAKA OF TOKYO JAPANESE STEAK & SEAFOOD

DIGI-VORTEX BY HARRIS AGENCY



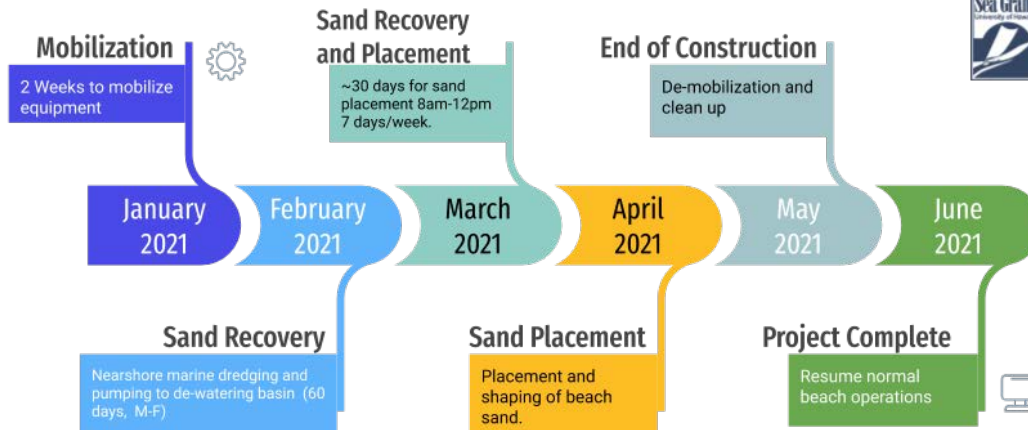
# Waikiki Beach Maintenance Planned for February 2021

---

The Department of Land and Natural Resources (DLNR) is planning another beach maintenance project from the Royal Hawaiian to Surfrider Moana. This project is under contract with the State and plans to start in late January, 2021. The WBSIDA is working closely with the DLNR to confirm the start date. The project includes hydraulic dredging and pumping up to 20,000 cubic yards of marine sand from offshore Waikiki as a follow up to the 2012 project which brought in 24,000 cubic yards to Waikiki Beach. The project is estimated last approximately 3-4 months. This is a public-private partnership with the WBSIDA providing \$1 million toward the \$3-4 million estimated total project cost. This project will complement the recently completed Royal Hawaiian Groin which was completed in early August, 2020 through a similar public-private partnership with the WBSIDA.

## Waikiki Beach Maintenance Phase II

\* Timeline dates are approximate and subject to change.



<https://www.wbsida.org/waikiki-beach-maintenance>

The goal of the Waikiki Beach Maintenance Phase II project is to restore and maintain the public beach between the Kuhio Beach Ewa Groin and the Royal Hawaiian Groin, by the replenishment of up to 20,000 cubic yards of sand dredged from nearshore to the beach. The nearshore sand was originally on the beach and eroded offshore through time, thus this project is a form of periodic “sand recycling.” It is estimated the beach width will be roughly doubled from the current condition in the project area. The 2012 project entailed 24,000 cubic yards brought in from the same nearshore sand source just outside the main “canoes” surf break in Waikīkī. The seaward limit of the restored beach will not exceed the historical position of the beach/water interface. The restored beach will enhance recreational opportunities and facilitate lateral access along the shore in addition to providing much-needed wave run-up mitigation to the adjacent properties. The intent of the project is to restore the beach conditions and shoreline position of the 2012 Beach Maintenance Project.

For more information visit:

<https://www.wbsida.org/waikiki-beach-maintenance>

# Environmental Impacts Statement Document Released for Waikīkī Beach Improvements

The Department of Land and Natural Resources (DLNR) has released an Environmental Impact Statement Preparation Notice (EISPN) for the Waikīkī Beach Improvement and Maintenance Project. The DLNR proposes beach improvement and maintenance projects in the Fort DeRussy, Halekulani, Royal Hawaiian, and Kūhiō Beach sectors of Waikīkī. These projects include the construction of new beach stabilization structures, and the recovery of offshore sand and its placement on the shoreline. The objectives of the proposed actions are to restore and improve Waikīkī's public beaches, increase beach stability through improvement and maintenance of shoreline structures, provide safe access to and along the shoreline, and increase resilience to coastal hazards and sea level rise. The proposed actions are intended to maintain the economic, social, aesthetic, recreational, environmental, cultural, and historical qualities of Waikīkī.

Over the past several years, and as recently as November of 2020, Waikiki has experienced record high tides (King Tides) that have exacerbated erosion and flooding. With the combination of beach erosion and King Tides, the backshore is frequently flooded, particularly during high surf events, accelerating damage to backshore infrastructure. Without beach improvements and

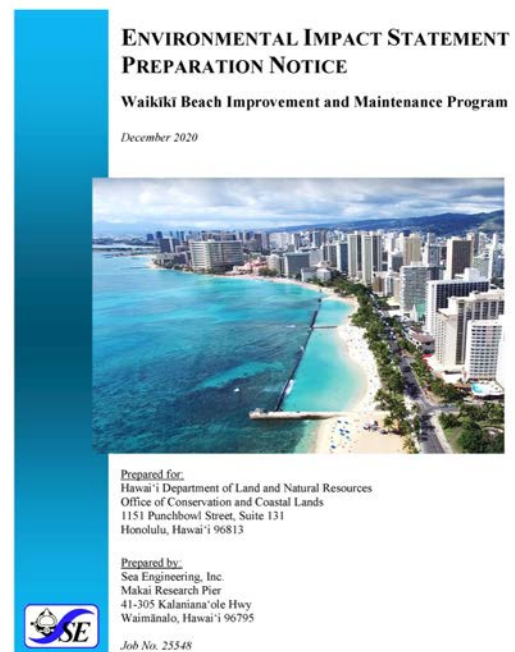




Figure 1-2 Waikiki beach sectors

maintenance, sea level rise is likely to result in total beach loss in Waikīkī and result in an estimated economic loss of \$50 million to \$150 million per hectare<sup>1</sup>. The loss of Waikīkī Beach alone would result in an annual loss of \$2.223 billion in visitor expenditures . Improvements and maintenance like those proposed in the EISP are necessary to restore and maintain the beaches of Waikīkī to continue to support Hawaii's tourism-based economy.

These events have highlighted the impacts of sea level rise on the beaches of Waikīkī. As sea levels continue to rise, beach loss will progressively degrade the recreational, social, cultural, environmental, aesthetic, and economic value of Waikīkī. After nearly 50 years of no new beach stabilization projects in Waikīkī, we are now at a crossroads with a clear and increasingly urgent need to implement maintenance and improvements to the shoreline in order to preserve and protect this unique and highly prized natural resource.

Comments for the EISP are due within 30 days of publication in the OEQC and need to be submitted to the DLNR/ Consultant by January 22, 2021.

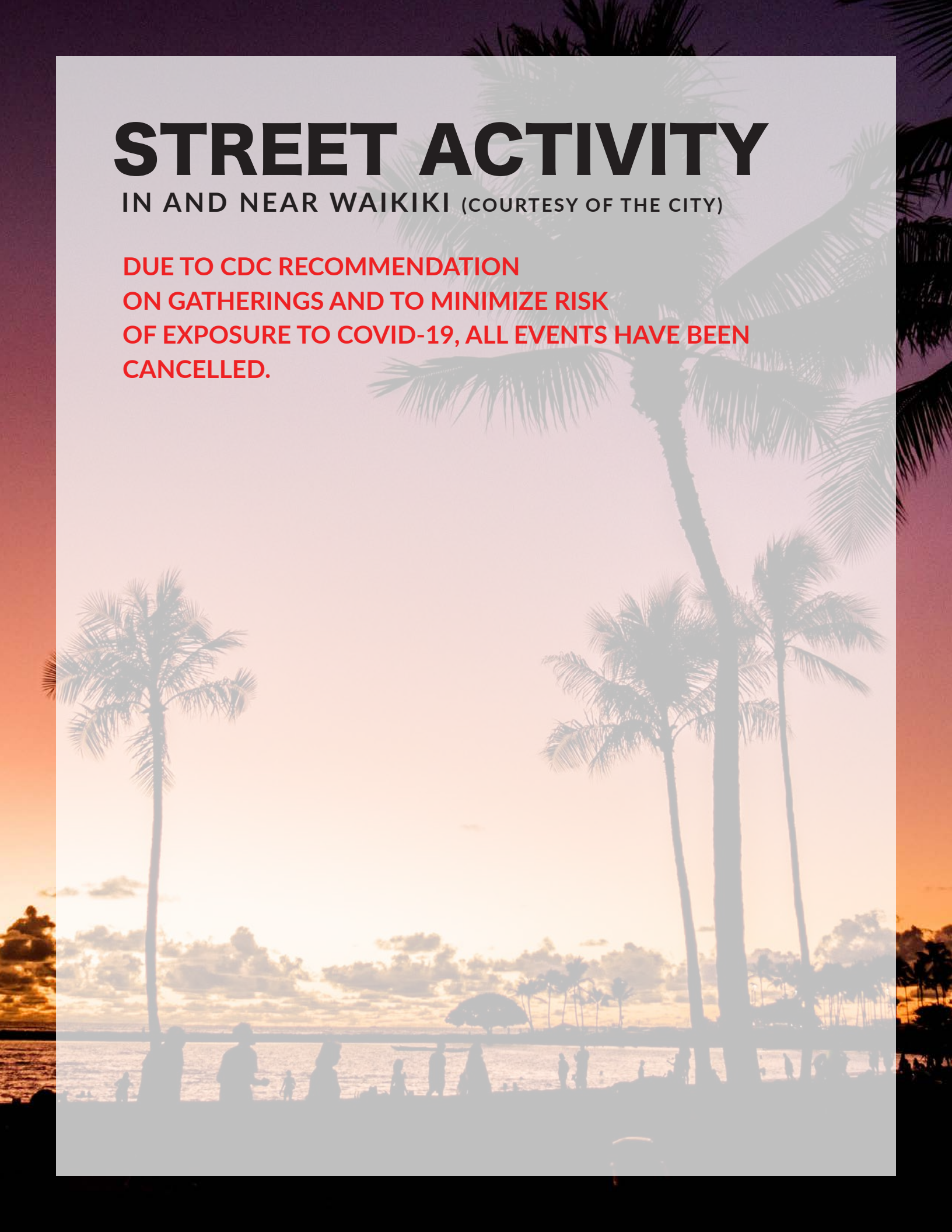
For more information visit: <https://www.wbsida.org/waikiki-beach-improvements>

<sup>1</sup>Tarui, N., Peng, M., Eversole, D. (2018). Economic Impact Analysis of the Potential Erosion of Waikīkī Beach. University of Hawai'i Sea Grant College Program. April 2018.

# STREET ACTIVITY

IN AND NEAR WAIKIKI (COURTESY OF THE CITY)

**DUE TO CDC RECOMMENDATION  
ON GATHERINGS AND TO MINIMIZE RISK  
OF EXPOSURE TO COVID-19, ALL EVENTS HAVE BEEN  
CANCELLED.**



# BASALT

Join us for Happy Hour!  
Open Daily

## basalt bar

### liquor

Well Drink

Happy  
Hour

5

### Jig & Bump

Short Stella Artois and choice of well shot:  
Tequila, Vodka, Gin, Bourbon, Fireball, Jägermeister,  
Tullamore Dew, Monkey Shoulder, or Canadian Club

7

### beer

Reg.  
Price

Happy  
Hour

#### DRAFT

#### Honolulu Beerworks 'South Shore' Stout

6.2% ABV | Honolulu, Hawai'i

7

5

#### Coronado Brewing 'Maui Tropical Tide' IPA

6.5% ABV | San Diego, California

8

6

#### New Belgium 'Voodoo Ranger' Imperial IPA

9.0% ABV | Fort Collins, Colorado

7

5

#### New Belgium '1554' Black Lager

6.0% ABV | Fort Collins, Colorado

7

5

#### Baptist Wit Blonde Ale

5.0% ABV | Ertvelde, Belgium

7

5

#### Stella Artois Lager

5.2% ABV | Leuven, Belgium

6

5

#### BOTTLES

#### Domestic Beer

Budweiser, Bud Light, or Coors Light

5

3

#### Imported Beer

Heineken, Corona, or Sapporo

6

4

### wine by the glass

Featured Red, Rosé, White, & Sparkling

10

5

*Items & prices are subject to change*



# BASALT

## appetizers

	Reg. Price	Happy Hour
<b>Pork Belly Buns</b> Charcoal bao buns, pickled vegetables, hoisin sriracha sauce	12	8
<b>(B) Adobo Chicken Wings</b> Soy-vinegar glaze, garlic chili dipping sauce	13	9
<b>(B) Duck Empanadas</b> Aged goat cheese, brandied cherry, pickled jalapeño, avocado lime crema	12	8
<b>Baja Fish Taco</b> Beer battered, chile slaw, pico de gallo	7	5
<b>Bar Burger</b> 4oz wagyu beef patty, cheddar cheese, brioche bun, lettuce, tomato, onion, Hawaiian Isle sauce <b>Add-On: (+\$2 each) Mushroom, Bacon, Avocado, or Egg</b>	—	7
<b>(B) Spicy Kampachi Poke</b> House-made sambal, avocado mash, rice chips, sweet soy sauce	15	—
<b>Avocado Crostini</b> Focaccia, tomato, radish, feta cheese, pomegranate molasses	15	—
<b>Crispy Quinoa Shrimp (GF)</b> Toasted quinoa, aji amarillo aioli	14	—
<b>Prime Rib Melt Sandwich</b> Swiss cheese, caramelized onions, creamed horseradish, au jus, french fries	16	—
<b>Chef's Burger</b> 8 oz Peruvian spiced wagyu beef patty, crisp onion ring, bacon, cheddar cheese, Asian guacamole, aji amarillo aioli, french fries	22	—
<b>Half Rack Baby Back Ribs</b> Spicy pineapple slaw, waffle fries, BBQ sauce <b>Add-On: Roasted Garlic Shrimp, 5pcs (+\$9)</b>	19	—
<b>French Fries</b>	4	3
<b>Garlic Fries</b>	5	4
<b>Togarashi Fries</b>	5	4
<b>Waffle Fries</b>	6	5
<b>Onion Rings</b>	6	5



SIGNATURE DISH



GLUTEN FREE

CONSUMING RAW OR UNDERCOOKED MEATS, POULTRY, SEAFOOD, SHELLFISH OR EGGS MAY INCREASE YOUR RISK OF FOODBORNE ILLNESS

# ISLAND COUNTRY MARKETS

®

**ABC Stores' Island Country Markets brings the freshest foods direct from Hawaii's farmers. Shop with ease and choose from local and international gourmet items. Enjoy our exquisite deli, vast selection of fine wines and spirits, or relax with a cup of Kona's best coffee from our Island Gourmet Coffee Bar at the Island Country Markets located The Ritz-Carlton Residences.**



*Our 8 oz grilled New York Steak with garlic butter served with mixed vegetables and a choice of rice or potatoes is one of our deli's favorite dishes.*



**383 Kalaimoku Street, Honolulu, HI 96815**

**Open Daily – 7 a.m. to 8 p.m.**

**(808) 466-4022**



# HAWAII CONVENTION CENTER

## HAWAII CONVENTION CENTER EARNS 2020 GREEN BUSINESS AWARD



The Hawai'i Convention Center has earned a 2020 Hawaii Green Business Award, announced in early December by the Hawaii State Energy Office.

The Center is among a total of 20 businesses, venues and events that were recognized on Dec. 4, 2020, for undertaking energy efficiency and sustainable business practices to advance Hawaii's clean energy and sustainability goals.

In 2018 the Center achieved Leadership in Energy and Environmental Design (LEED) Gold certification under its Ho'omalūō conservation program. This program helps the Center continue its leadership in environmental best practices, including energy consumption, water use and waste diversion.

"The Hawai'i Convention Center continues to implement industry-leading best practices that will reduce the environmental impact of our meetings and events," said Teri Orton, general manager of the Hawai'i Convention Center, managed by ASM Global.




In October 2019, the Center hosted its first-ever zero-waste event - the Pacific Building Trade Expo - helping divert 1,283 pounds of waste from the landfill. This included reducing, reusing, sorting and recycling, as well as sending items to H-POWER, the Honolulu Program of Waste Energy Recovery.

The Center also incorporates guest education and participation through its One Million Trees effort to support the reforestation of endemic Legacy Trees in Hawai'i.

## HAPPY HOLIDAYS



From our 'ohana to yours, we wish you a safe, happy and healthy holiday season.

-  @HawaiiConventionCenter
-  @HIConventionCtr
-  @HawaiiConventionCenter

For more information on the Hawaii Green Business Program, visit [greenbusiness.hawaii.gov](http://greenbusiness.hawaii.gov).

For more on the Center's environmental sustainability efforts, visit [HawaiiConvention.com](http://HawaiiConvention.com).



Rediscover  
Waikīkī at  
**Hyatt Regency  
Waikiki.**

Aloha Kama'āina Package  
**\$179<sup>00</sup>**

Per room, per night.

Looking to getaway? Stay close to home and plan your staycation to Waikiki. Save up to 30% and more with rates from \$179, plus complimentary parking and no resort fee. Upgrade to a premium room category for only \$20 more per night.

Book and stay through March 31, 2021.  
Use special offer code KAMWEL  
or call (808) 923-1234.

For reservations, visit  
**hyattregencywaikiki.com**

HYATT REGENCY WAIKIKI  
BEACH RESORT & SPA  
2424 Kalākaua Avenue  
Honolulu, Hawai'i 96815-3289



**HYATT  
REGENCY<sup>®</sup>**

WAIKIKI BEACH  
RESORT & SPA



# Talk Story



WAIKIKIBEACHWALK.COM |   

## Happy New Year from Waikiki Beach Walk!

While this year has been filled with unimaginable hardships and challenges, there are still many things to be grateful for. At Waikiki Beach Walk we are grateful to be here and continue to shop, play and dine with you in Waikiki! We're excited to step into 2021 with new stores and fun filled activities for the whole family! See what's new at Waikiki Beach Walk!

## Waikiki Beach Talk

If you haven't stopped by Waikiki Beach Walk recently here's the talk of the town.



### New Pop-Up Store Opening: Oasis by Kolohe

Come and check out this minimalist chic jewelry pop-up! Oasis is a new luxury concept of fine jewelry with pieces for everyone. Featuring an array of solid gold, gold fill and other metal options, Oasis jewelry fits all. Walk into the Oasis and choose from different semi precious stones, chain styles and metals to create a truly one-of-a-kind piece.

**Instagram:** [OasisbyKolohe](https://www.instagram.com/OasisbyKolohe)

**Website:** [www.shopkolohe.com](http://www.shopkolohe.com)

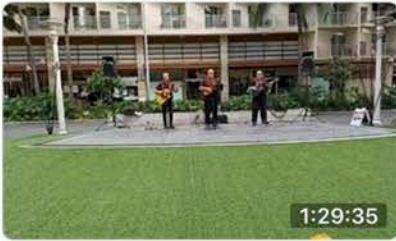
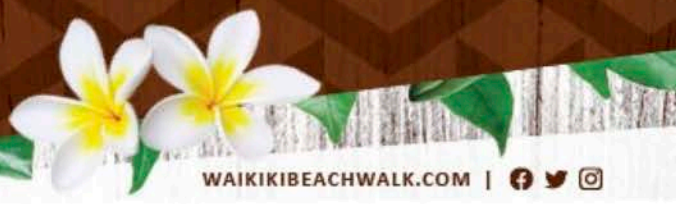
### New Store Opening: Elephant Walk

Elephant Walk, Hawaii's Premier Lifestyle Gift Gallery, has been locally owned and operated since 1983. Elephant Walk offers exclusive collections of clothing for men, women and keiki (children); Handcrafted Jewelry, Ornaments and Home Décor; and is the only place on Oahu to feature the Magic of "Del Sol" - where Everything Changes Color in the SUN!!



**Phone:** 808-922-2115

**Website:** [http://immanuel-enterprises.com/?page\\_id=6](http://immanuel-enterprises.com/?page_id=6)



Waikiki Beach Walk's Video

a day ago · 4.2K Views



## Live Music Every Tuesday 4:00 P.M.

This year we are thankful to be able to share Hawaiian music with you every Tuesday. While so much of our world has changed, we are thankful that Waikiki Beach Walk is still able to connect with you through mele and share our aloha through Ku Ha'aheo on our plaza stage from 4:30p.m. – 6:00 p.m. If you're around Waikiki Beach Walk come and stop by and make sure to wear your mask!

Join us in person as you stroll through Waikiki Beach Walk or from the comfort of your own home on our [Facebook](#) or [Instagram](#) accounts!

## Free Daily Ukulele Classes at The Ukulele Store

Free ukulele classes offered at The Ukulele Store (located on the second floor of Waikiki Beach Walk) starting at 4:30 p.m. Lessons are taught by Na Hoku Hanohano award winner, Tyler Gilman who grew up playing ukulele and has over 25 years of experience in teaching ukulele. Call to schedule a lesson.

**Phone:** 808-888-5469

**Website:** <https://ukulelestorehawaii.com>



## Free Hula Classes Every Sunday Morning

Enjoy a morning hula class out on Waikiki Beach Walk's Plaza. This hour-long class is reserved up to 15 individuals, all ages and skill levels welcome. Masks are mandatory and social distancing guidelines in place. Classes offered every Sunday from 9:00 a.m. – 10:00 a.m. through 2020.

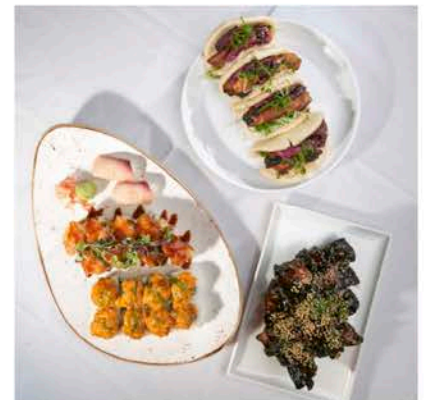
[Please RSVP to register for a class.](#)

## Crave Worthy Carryout at Roy's Waikiki

Roy's Waikiki offers carry out specials Monday – Wednesday and Saturday! Carry out specials vary each day featured to the right is Saturday's 3 platter pack that includes Sushi Platter (Spicy Tuna Roll, Salmon Crab Roll, and Hamachi Nigiri), 10 Szechuan Baby Back Ribs, and Kalbi Chicken Bao Bun. Carry out specials can be picked up curbside on Lewers St. from 4:00 p.m. – 8:00 p.m.

**Phone:** 808-923-7697

**Website:** <https://www.royyamaguchi.com/roys-waikiki-oahu>



# NEW YEAR GOOD FORTUNE AND GREAT DEALS AT ROYAL HAWAIIAN CENTER



Royal Hawaiian Center is ringing in the New Year with good fortune and great deals with its **Lucky Bag** promotion from January 1 to 3, 2021! The celebration kicks off at 10:30 a.m. on New Year's Day at The Royal Grove with a Japanese drum performance by Kenny Endo's Taiko Center of the Pacific. Then starting at 11 a.m., shoppers will receive incredible savings on Lucky Bags sold for at least half their retail value at select merchants and restaurants. The bag's contents are kept secret until it's purchased! According to Japanese custom, people's Lucky Bags reflect the good fortune they'll enjoy in the year ahead.



The bags range from a few dollars to a few hundred, depending on the store. No matter where you shop, you're guaranteed to receive items that are worth double or more of what you paid! Previous Lucky Bag contents have included restaurant gift cards, handbags, beauty products and jewelry.

Participating merchants include **kate spade new york**, **House of Mana Up**, **Dean and DeLuca**, and more. For a full list, visit [www.RoyalHawaiianCenter.com](http://www.RoyalHawaiianCenter.com).

Bags are limited, so shop early, save big, and get lucky!



House of Mana Up

## STEP IN FOR SAVINGS AT BUILDING A

For a limited time, guests will get a special treat when they shop with merchants in Building A! Spend \$25 or more through January 10, 2021, to receive special holiday gifts designed by local artist, Suzanne Jennerich. Shops and boutiques are also offering special savings on select regularly priced items, as well as new discounts on merchandise. Make your way to Building A to shop with **Harley Davidson Waikiki** (Level 2), **House of Mana Up** (Level 1), **Island Slipper** (Level 2), **Laki Designs** (Level 3), **‘Ōiwi Ocean Gear** (Level 1), **Royal Hawaiian Golf Club** (Level 2), **Royal Hawaiian Quilt** (Level 2), **Western Classics** (Level 3), and more!



## LEI MAKING CLASSES RETURN!

We've missed hosting guests at our cultural classes and are excited to announce the return of Lei Making in the new year! Starting on Friday, January 8, 2021, Lei Making lessons will be held from 1 p.m. – 2 p.m. on Fridays and Saturdays in the Building B Breezeway on Level 1. We've implemented new protocols for the safety of our guests and cultural instructors. Classes will be limited to a maximum of 16 guests, tables will be socially distanced, face coverings are required, and ample hand sanitizers will be available. Each guest will be provided with their own lei making kits, which will include a basket of fresh and fragrant flowers, needle, thread, and scissors. We can't wait to welcome guests back and share the aloha spirit through our cultural lessons.

**E komo mai!**

# NEW YEAR GOOD FORTUNE AND GREAT DEALS AT ROYAL HAWAIIAN CENTER



## CRYSTAL JEANS NOW OPEN

**Crystal Jeans** (Building A, Level 1) is now open offering a distinctive collection of high-end denim for women and men, including the popular Laguna Beach Jean Co. brand. Locals and visitors alike are sure to find fashion pieces that make a statement and reflect their individual style. The boutique also carries a selection of women's and men's apparel, loungewear, accessories, and jewelry.



## WEEKEND BEACH BENTO DELIVERY LAUNCHES

Hitting the shores of Waikīkī for the weekend? Get your lunchtime bento delivered and spend more time in the sun and sand with our new **Weekend Beach Bento Delivery** service. Featuring **Noi Thai Cuisine's** popular bento boxes, guests can pre-order their lunch for pick-up at 12 p.m. or 2 p.m. at the Public Beach Access lane between the Royal Hawaiian Hotel and Outrigger Waikīkī. Available on Saturdays and Sundays only. Scan the QR code to start your order!



## NEW DINING OPTIONS COMING TO PĀ'INA LĀNAI

Two new seafood restaurants are set to open in the **Pā'ina Lānai Food Court** in Spring 2021!

**Poke Waikīkī** will offer popular poke bowls featuring fresh ahi and salmon, as well as mochiko chicken, a favorite dish with kama'āina. Guests can also select from a selection of poke sushi burritos, a fun twist on the classic Japanese sushi rolls. Prices range from \$11 to \$12 poke bowls and \$7 to \$13 for half and full-orders of the sushi burritos.



**Wicked Maine Lobster** was founded by brothers Alex and Eric Howard to bring the best Maine seafood dishes to Southern California. Signature dishes include their Maine Lobster Roll, California Lobster Taco, and New England style clam chowder. Other popular menu items include Chowder Fries, a unique take on poutine with crispy cut fries smothered in clam chowder and topped bacon and cheese, and Fish n' Chips, featuring wild caught haddock. Signature items on the Wicked Maine menu range in price from \$8 for the New England Clam Chowder to \$21 for the Maine Lobster Roll, while other dishes run between \$14 - \$17 and sides under \$8.





**Honolulu Star Advertiser  
Best Japanese Teppanyaki Steakhouse  
8th Consecutive Year!**



Tanaka of Tokyo Central

**NOW OPEN  
FOR DINE-IN!**

CALL 808 922-4702 for  
Reservations

Take-out Also Available!

**TAKE-OUT MENU**

Our mission is to provide the highest quality steak and seafood with impeccable service. We are excited to share our New Value Menu - the same delicious food at a significantly reduced price!

**LOBSTER FRIED RICE! \$26.50**

For A Limited Time Only,  
Come Try Our Decadent  
Lobster Fried Rice - ½ Lb.  
Of Succulent, Cold Water  
Lobster On A Generous  
Portion Of Our Famous  
Teppan Garlic Fried Rice!



*While Supplies Last*



**BENTOS**

- ① **Tanaka Sirloin** **\$21.50**
- ② **Salmon** **\$19.75**
- ③ **Scallop** **\$18.25**
- ④ **Chicken Teriyaki** **\$16.50**
- ⑤ **Garlic Shrimp** **\$17.25**

*Includes: Salad, Steam Rice, Tsukemono,  
& our Signature Ginger & Mustard Sauces*

**APPS / ADD-ONS**

- Fried Rice** **\$4.20**
- Teppan Veg** **\$4.00**
- Lobster Tail** **\$16.00**
- Shrimp** **\$7.40**
- Chicken Teriyaki** **\$10.00**



*Menu Subject To Change*

*"Customer safety is our number one priority and our team is continuously working hard to ensure that all Restaurant Reopening Guidelines established by the City and County of Honolulu are being followed meticulously! Additionally, we are excited to share that Tanaka of Tokyo is one of the safest restaurants to dine in due to our extensive ventilation system which exhausts and exchanges dining room air every 2 minutes – almost as good as dining outside!!! The power of our exhaust fans with ducts above each cooking station provides a combined 27,000 CFM of exhaust air while fresh air is being drawn in at a rate 15 times more than Department of Health Standards!"*

**Take-Out 12-2:00pm and 4-7:30pm • Dine-In open from 5:00pm**  
**Waikiki Shopping Plaza, 2250 Kalakaua Ave. 3F**  
**Tel 922-4702 • www.tanakaoftokyo.com**



# Get Your Share of Online Purchases With Our **Website and Digital Marketing** Upgrades

Online Ordering • Website Hosting, Development & Performance  
Paid Digital Media • Social • Hawaii-Based Content Creation

Call us today for your digital evaluation!  
[janas@harris-agency.com](mailto:janas@harris-agency.com) -or- (808) 946-4525



# WAIKĪKĪ IMPROVEMENT ASSOCIATION

---

## *Wikiwiki Wire* **GUIDELINES**

Wikiwiki Wire is published on the first Friday of each month. If you would like to share your news with other members, please send your info to: [editor@waikikiimprovement.com](mailto:editor@waikikiimprovement.com).

### **Submission Deadline**

Waikīkī-related news and information submitted by members (or their PR agencies) for the Wikiwiki Wire newsletter should be received no later than **5 PM THURSDAY, ONE WEEK PRIOR** to the newsletter's publication and distribution on the first Friday of each month.

**News & Stories:** Please submit any Waikīkī-related stories/articles as a Word doc and include photos to accompany stories/ articles. For best results, please upload photos as a separate JPEG attachment - maximum 2 MB each image.

**Flyers/PDFs:** Waikīkī-related flyers are welcome but must look like advertising flyers and not press releases. Please format flyers to an 8.5" x 11" size and submit them in a PDF format.

**Press Releases:** Please submit Waikīkī-related press releases as a Word doc. Press Releases that do not fit within one page of the Wikiwiki Wire newsletter will be returned for editing.

**Photos:** For best results, please upload photos as a separate JPEG attachment - maximum 2 MB each image.



# WAIKĪKĪ IMPROVEMENT ASSOCIATION

We are a cross-section of business, government and the community; our members care about the future of this special place - Waikīkī.

For more than 40 years, the Waikiki Improvement Association has remained true to its objective: to improve, enrich and beautify Waikīkī for the benefit of residents and visitors alike and to promote conditions conducive to the economic and cultural good and for the betterment of the entire community.

## HAWAIIAN DIACRITICAL MARKS

Waikīkī Improvement Association recognizes the use of diacritical marks (i.e., glottal stop (ʻ), macron (ā) in place names of Hawaiʻi, such as Waikīkī and Kalākaua Avenue and will include them whenever possible. We also respect the individual use (or not) of these markings for names of organizations and businesses.

There will also be times when we may not have a chance to add or change the markings in all of the articles submitted and when that happens, e kala mai.