



WAIKĪKĪ IMPROVEMENT ASSOCIATION

# *Wikiwiki Wire*

*E-newsletter keeping you up-to-date on Waikīkī news, features, trends and more!*



# Contents

3  
WAIKĪKĪ BEACH MAINTENANCE  
PROJECT BEGINS WITH A BLESSING

4  
WAIKĪKĪ BEACH MAINTENANCE  
PROJECT

6  
CENTENNIAL PARK IS OPEN!

## MORE WAIKĪKĪ FOOD, NEWS & EVENTS

BASALT VALENTINE'S DAY WEEKEND SPECIAL

DUKE'S LANE MARKET & EATERY: ISLAND  
COFFEE GOURMET, TEAPRESSO BAR, & IL  
GELATO HAWAI'I

ABC STORES: UBE PANCAKES

HAWAI'I CONVENTION CENTER LAUNCHES  
HEALTH & SAFETY VIDEO

WAIKĪKĪ BEACH WALK: TALK STORY

RING IN THE YEAR OF THE OX AT ROYAL  
HAWAIIAN CENTER

DIGI-VORTEX - WEBSITE & DIGITAL MARKETING



DEPARTMENT  
OF LAND AND  
NATURAL  
RESOURCES

# Waikiki Beach Maintenance Project Begins with A Blessing



(HONOLULU) – The multi-million dollar effort to restore sand to Waikiki Beach has begun. This morning Kahu Kordell Kekoa joined project principals for a traditional Hawaiian blessing.

Mobilization of heavy equipment began last week and soon hydraulic dredging and pumping of as much as 20,000 cubic yards of marine sand about a ½ mile offshore begins. The Waikiki Beach Maintenance Project is intended to restore and maintain the beach between the Kūhiō Beach Ewa Groin and the Royal Hawaiian Beach areas.

The project is a public-private partnership with DLNR and the Waikiki Beach Special Improvement District which is providing \$1 million of the \$3-4 million estimated total project cost. The project will result in certain beach areas being closed or restricted and is expected to be complete sometime in May.

# Waikiki Beach Maintenance Project



**START DATE:** February 1, 2021.

**DURATION:** Approximately ~4 months (February-May project window).

**LOCATION:** Kuhio Beach DH basin, Royal Hawaiian & Moana Surfrider Beaches.

For more information, visit <https://www.wbsida.org/waikiki-beach-maintenance> or contact Dolan Eversole at [eversole@hawaii.edu](mailto:eversole@hawaii.edu)

The Department of Land and Natural Resources in partnership with the Waikiki Beach Special Improvement District Association are initiating a Waikiki Beach maintenance project.

## WAIKĪKĪ BEACH MAINTENANCE PROJECT



The project includes:

- Offshore dredging and pumping of 20,000 cubic yards sand to Kuhio Beach.
- The transfer and placement of beach sand from the Diamond Head swim basin of Kuhio Beach to the Royal Hawaiian beach cell
  - Sand pumping and de-watering 8am to 5pm (M-F).
  - Sand hauling and placement 8am to 12pm (7 days/week).

PHOTO BY CAROLANN BIEDERMAN



# Centennial Park is Open!

February 1st was a landmark day for Centennial Park Waikiki – it's open and it's beautiful! Mayor Rick Blangiardi was most gracious in accepting the park on behalf of the City and County of Honolulu. Congratulations to the hard-working volunteers on the Rotary Centennial Park Committee. We also want to congratulate the many volunteers who put it all together with their hands-on labor in the park, and the many generous donors, community supporters and neighbors who believed in the vision that has brought the park to this milestone moment.

Park hours are 6:00 a.m. to 7:00 p.m. daily. The Seaside and Royal Hawaiian Avenue gates are open. Take a walk around the park, and let's safely enjoy and protect our new green oasis in Waikiki. The landscaping includes a wide variety of plant life ranging from Monkeypod and various palm trees, to smaller plants like pōhinhina, ti, ginger, and spider lilies (now blooming), surrounding a lush lawn of St. Augustine grass. Contact the City & County Parks Department at (808) 768-3003 from 7:45 a.m. until 4:30 p.m. or [parks@honolulu.gov](mailto:parks@honolulu.gov) for questions and concerns about the Park.

Next steps: The fundraising continues for Phase 2, which includes installation of seating, a surrounding rock wall, decorative fencing, gates and more. Visit [www.centennialparkwaikiki.org](http://www.centennialparkwaikiki.org) and click DONATE to make a contribution. Click VOLUNTEER or GET INVOLVED to volunteer. Mahalo for your continued support!

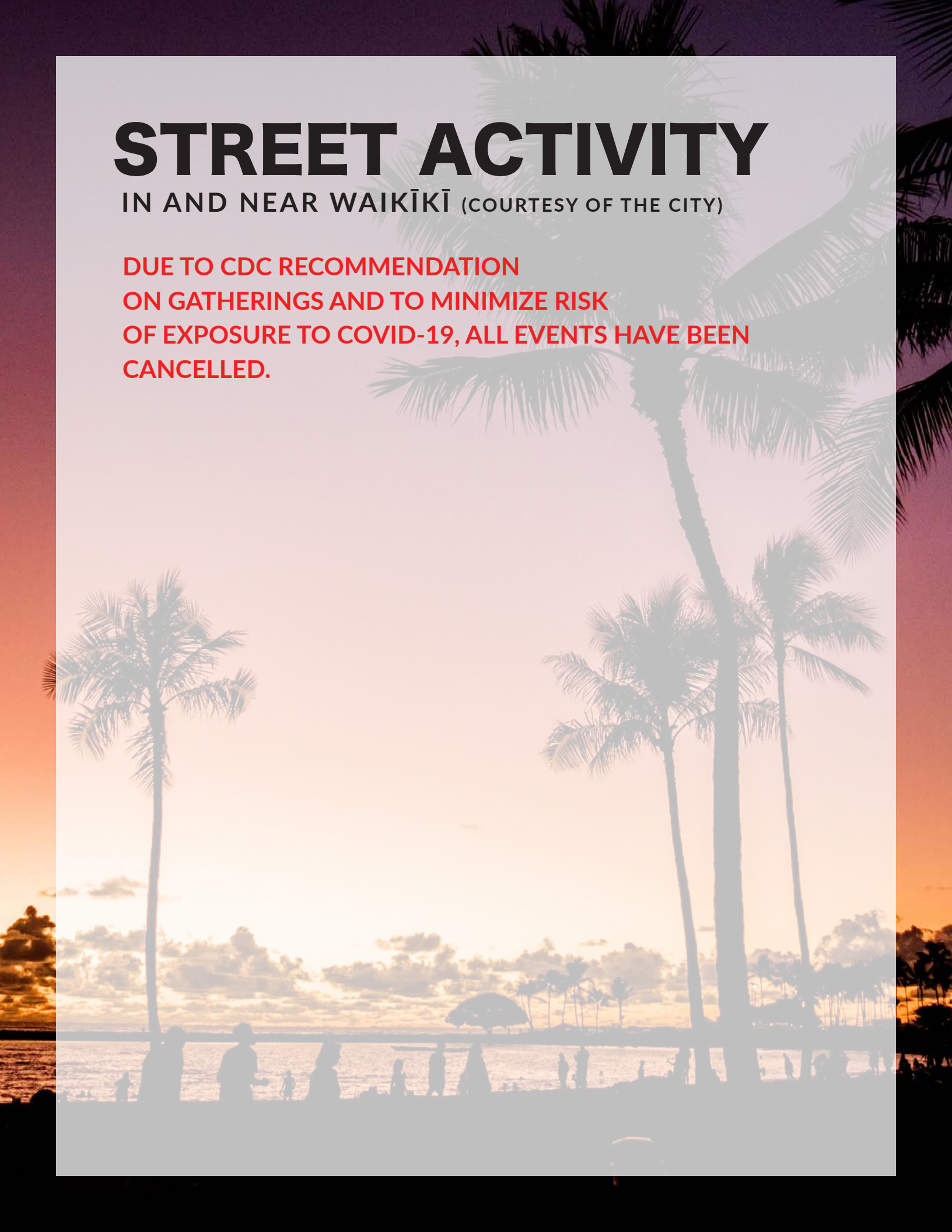
PHOTO BY DAVID C. LIVINGSTON



# STREET ACTIVITY

IN AND NEAR WAIKĪKĪ (COURTESY OF THE CITY)

**DUE TO CDC RECOMMENDATION  
ON GATHERINGS AND TO MINIMIZE RISK  
OF EXPOSURE TO COVID-19, ALL EVENTS HAVE BEEN  
CANCELLED.**



# BASALT



## Valentine's Day Weekend Specials

### Brunch

Available February 12-14, 8am-2pm

**Red Velvet Waffle \$16**

Two waffles, cream cheese whip,  
strawberries

**Pipikaula Omelet \$19**

House made pipikaula, onions,  
red peppers, jack cheddar cheese, avocado mash,  
country potatoes. Choice of toast and jam

### Dinner

Available February 13-14, 5pm-9pm

*\*Modified Menu*

**Red Wine Poached Pear Salad \$15**

Waipoli greens, blue cheese, walnuts,  
champagne vinaigrette

**Surf & Turf \$49**

Crab stuffed baked shrimp, romesco sauce,  
pan roasted New York Steak,  
pomegranate zinfandel reduction, pomme purée

**Guava-Strawberry Pavlova \$10**

Rosewater meringue, crèmeux, champagne

**Prix Fixe \$65**

All three dinner specials  
*Tax and gratuity not included*

## Champagne By the Glass

Taittinger La Francaise Brut NV \$25

Krug Grande Cuvée NV \$45

**BASALT**  
AT DUKES LANE MARKET & EATERY

For Reservations  
(808) 923-5689 | [basaltwaikiki.com](http://basaltwaikiki.com)



# DUKES LANE MARKET & EATERY

2255 KUHIO AVENUE, HONOLULU, HI 96815

(808) 923-5692



ISLAND GOURMET  
COFFEE.



CREATE  
YOUR  
OWN

# Latte Art



## Teapresso Bar



# Spicy LI HING LAVA

Available in 3 refreshing flavors:  
Pineapple, Mango, & Strawberry



## IL GELATO HAWAII



### gelato — IN DA —

## COCONUT SPECIAL

YOUR FAVORITE GELATO  
SERVED IN A SOUVENIR  
COCONUT SHELL BOWL





# Ube Pancakes

Buttermilk ube pancakes covered in our homemade ube syrup. Topped with strawberries and whipped cream.

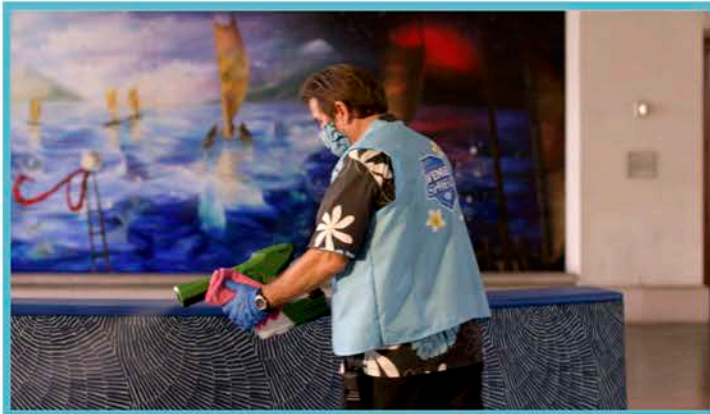
8.99



Available at the ABC Store in the Imperial Hotel on Lewers Street and the Island Country Markets in the Ritz Carlton on Kuhio Ave



## HAWAII CONVENTION CENTER LAUNCHES NEW HEALTH AND SAFETY VIDEO



The Hawai'i Convention Center is pleased to offer a comprehensive health and safety program developed by leading venue and event management company ASM Global to ensure the highest levels of cleanliness and safety for our staff, guests and communities.

To help promote this program, the Center has launched a new video featuring the new protocols, available at [hawaiiconvention.com](http://hawaiiconvention.com).

In compliance with guidelines established by the Centers for Disease Control (CDC) and the State of Hawaii Department of Health, these extensive measures include:

- Enhanced cleaning and sanitation for high-touch surfaces
- Thermal cameras and temperature checks
- The use of personal protective equipment (PPE)
- Modified food and beverage operations
- The increased availability of hand sanitizer dispensers
- Contactless transaction
- Special signage and social distancing guidelines

## National Human Trafficking Awareness Day



The Center featured blue lighting from Jan. 10-12, 2021, to raise awareness for National Human Trafficking Awareness Day, recognized nationally on Jan. 11.

As part of the campaign, city landmarks were lit with blue lights, in addition to Wear Blue Day. Visit [www.dhs.gov/blue-campaign](http://www.dhs.gov/blue-campaign) for more.

 @HawaiiConventionCenter

 @HIConventionCtr

 @HawaiiConventionCenter



# Talk Story

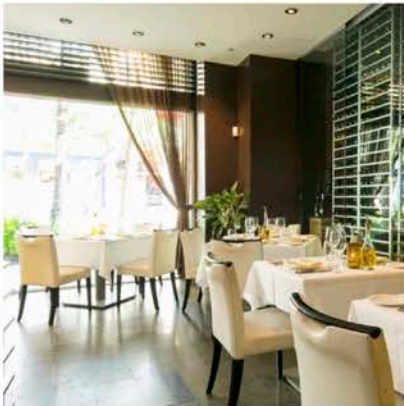
WAIKIKIBEACHWALK.COM |   

## A Lovely February at Waikiki Beach Walk

Whether it's a small gift, new experience, or an elaborate meal for two, celebrating your loved ones has always been a sweet spot for Waikiki Beach Walk and can help you plan the perfect way to say "I love you." Check out our Valentine's Day offerings to see what's new at Waikiki Beach Walk!

### Waikiki Beach Talk

If you haven't stopped by Waikiki Beach Walk recently here's the talk of the town.



#### Thinking About Valentine's Day

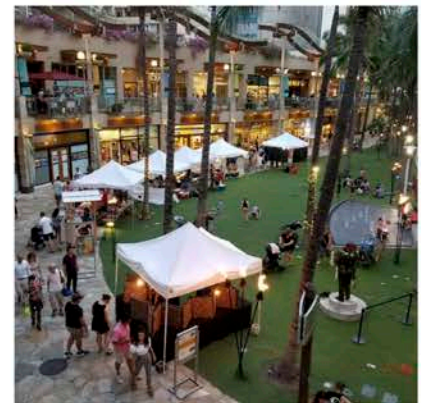
If you're a couple who loves to try new things, Taormina Sicilian Cuisine is offering a 4-course tasting menu for lunch (\$42 pp) and dinner (\$65 pp) on Valentine's Day! The tasting menu comes with chef's carpaccio, choice of second course, Filet de manzo, and homemade tiramisu.

**Phone:** 808-926-5050

#### Waikiki Beach Walk Farmer's Market Every Wednesday

Our farmer's market is back every Wednesday from 4:00 p.m. – 8:00 p.m. Come and check out our local vendors and artisans at our Waikiki Beach Walk plaza!

**When:** Every Wednesday 4:00 p.m. – 8:00 p.m.  
**Where:** Waikiki Beach Walk Plaza





## Live Music Every Tuesday 4:00 P.M.

Tuesday has become one of our favorite days in the week! Want to know why? From 4:30p.m. – 6:00 p.m. every Tuesday, Kumu Hula Blaine Kia will perform live Hawaiian music on our Waikiki Beach Walk plaza stage. If you're around Waikiki Beach Walk come and stop by and make sure to wear your mask!

Join us in person as you stroll through Waikiki Beach Walk or from the comfort of your own home on our [Facebook](#) or [Instagram](#) accounts!

## Free Daily Ukulele Classes at The Ukulele Store

Free ukulele classes offered at The Ukulele Store (located on the second floor of Waikiki Beach Walk) starting at 4:30 p.m. Lessons are taught by Na Hoku Hanohano award winner, Tyler Gilman who grew up playing ukulele and has over 25 years of experience in teaching ukulele. Call to schedule a lesson.

**Phone:** 808-888-5469

**Website:** <https://ukulelestorehawaii.com>



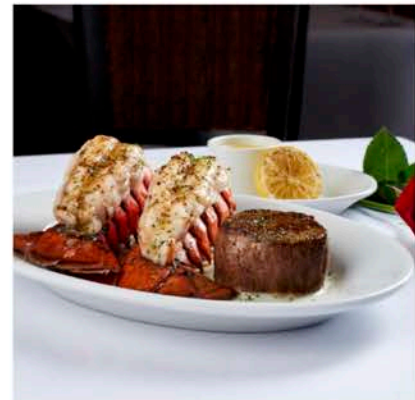
## Free Hula Classes Every Sunday Morning

Enjoy a morning hula class out on Waikiki Beach Walk's Plaza. This hour-long class is reserved up to 10 individuals, all ages and skill levels welcome. Masks are mandatory and social distancing guidelines in place. Classes offered every Sunday from 9:00 a.m. – 10:00 a.m. Please register for our class on Eventbrite.

## Indulge at Ruth's Chris Steak House This Valentine's Day

Celebrate the love of your life indulging in Ruth's Chris Waikiki's Surf & Turf entrée, featuring two cold-water lobster tails served next to a sizzling filet. It's a timeless pleasure, but it's only available for a limited time. Make your reservation today.

**Phone:** 808-440-7910



# RING IN THE YEAR OF THE OX AT ROYAL HAWAIIAN CENTER



Lunar New Year arrives at Royal Hawaiian Center with socially-distanced cultural activities, special gift with purchases, fun photo opportunities, and lots of good luck! The festivities will be offered throughout the month of February.



## CELEBRATE THE LUNAR NEW YEAR

Spend \$150 or more and select a Lunar New Year Lucky Laisee envelope for a prize including a \$100, \$50, \$30 Royal Hawaiian Center gift card, exclusive merchandise designed by local artist Suzanne Jennerich, and more!

**Lunar New Year**  
February 12

**Royal Wish Wall**  
February 5-28

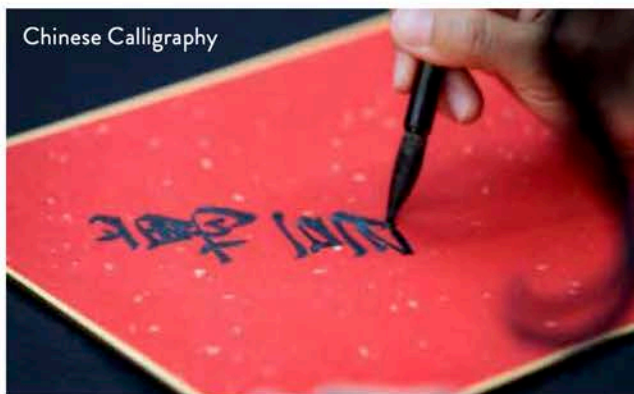
**Lunar New Year Gift With Purchase**  
February 5-28

**Calligraphy in the Royal Grove**  
February 13 | 2PM-5PM



**3 FREE HOURS  
OF PARKING**  
with any purchase

Royal Hawaiian Center  
2201 Kalākaua Avenue  
Honolulu, HI 96815



Chinese Calligraphy

On Saturday, February 13, from 2:00 – 5:00 p.m., Chinese calligrapher Ina Chang will be at The Royal Grove to beautifully write popular and auspicious blessings associated with Lunar New Year for guests. First come first serve.

Additionally, from February 5 – 28, guests are invited to participate in additional Lunar New Year themed promotions and activities, including:



Lai See Envelopes

**Lucky Lai See Gift with Purchase** – Guests who spend at least \$150 at Royal Hawaiian Center shops and restaurants will receive a lucky lai see envelope for a chance to win an array of prizes, including Royal Hawaiian Center gift cards valued between \$30 to \$100, exclusive travel and reusable shopping bags designed by local artist Suzanne Jennerich, and gift cards from select Royal Hawaiian Center merchants.

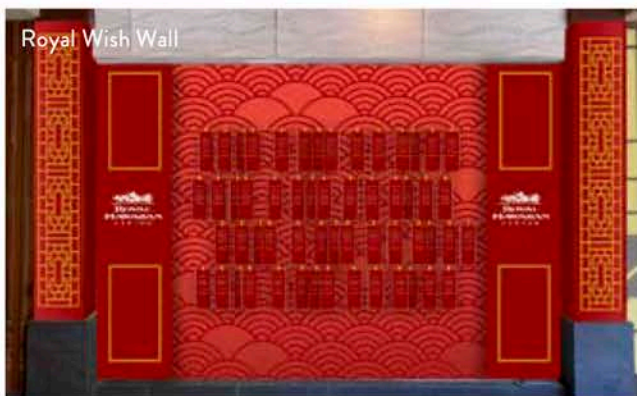
# RING IN THE YEAR OF THE OX AT ROYAL HAWAIIAN CENTER



Lunar New Year

**Lucky Lion Selfies** – Commemorate the Year of the Ox with Chinese lions at the specially decorated Royal Hawaiian Center Rotunda window in Building C, Level 1, across from The Cheesecake Factory. The window will also feature elements associated with Lunar New Year, including red lanterns and firecrackers.

**Lunar New Year Wish Wall** – Guests are invited to share their good fortune and wishes on our Lunar New Year Wish Wall, located in Building C, Level 3.



Royal Wish Wall

**Year of the Ox Scavenger Hunt**– Find the Year of the Ox symbols hidden throughout Royal Hawaiian Center, snap a photo, and post it on your Instagram Story for a chance to win lucky prizes, including a 2-night stay at the Sheraton Waikiki (maximum \$700 value) and a \$100 Royal Hawaiian Center gift card.



Mahalo Tote

## MAHALO TO OUR HEROES

Royal Hawaiian Center wants to extend our mahalo to teachers, first responders and healthcare workers for their continued efforts. From February 12, 2021 through February 15, 2021, teachers and frontline workers who dine at any of Royal Hawaiian Center’s restaurants, Pā’ina Lānai Food Court, or specialty eateries will receive a free MAHALO tote bag with exclusive merchandise. To redeem show your receipt(s) and employee ID to our Helumoa Hale Guest Services Staff, located in Building B, Level 1, next to Il Lupino Trattoria & Wine Bar.

# Get Your Share of Online Purchases With Our **Website & Digital Marketing** Upgrades



Online Ordering • Website Hosting, Development & Performance  
Paid Digital Media • Social • Hawaii-Based Content Creation

Contact us today to discuss how we can help!  
Call Angela at (808) 946-4525 or email [angelam@harris-agency.com](mailto:angelam@harris-agency.com)





# WAIKĪKĪ IMPROVEMENT ASSOCIATION

---

## *Wikiwiki Wire* **GUIDELINES**

Wikiwiki Wire is published on the first Friday of each month. If you would like to share your news with other members, please send your info to: [editor@waikikiimprovement.com](mailto:editor@waikikiimprovement.com).

### **Submission Deadline**

Waikīkī-related news and information submitted by members (or their PR agencies) for the Wikiwiki Wire newsletter should be received no later than **5 PM THURSDAY, ONE WEEK PRIOR** to the newsletter's publication and distribution on the first Friday of each month.

**News & Stories:** Please submit any Waikīkī-related stories/articles as a Word doc and include photos to accompany stories/ articles. For best results, please upload photos as a separate JPEG attachment - maximum 2 MB each image.

**Flyers/PDFs:** Waikīkī-related flyers are welcome but must look like advertising flyers and not press releases. Please format flyers to an 8.5" x 11" size and submit them in a PDF format.

**Press Releases:** Please submit Waikīkī-related press releases as a Word doc. Press Releases that do not fit within one page of the Wikiwiki Wire newsletter will be returned for editing.

**Photos:** For best results, please upload photos as a separate JPEG attachment - maximum 2 MB each image.



# WAIKĪKĪ IMPROVEMENT ASSOCIATION

We are a cross-section of business, government and the community; our members care about the future of this special place - Waikīkī.

For more than 40 years, the Waikiki Improvement Association has remained true to its objective: to improve, enrich and beautify Waikīkī for the benefit of residents and visitors alike and to promote conditions conducive to the economic and cultural good and for the betterment of the entire community.

## HAWAIIAN DIACRITICAL MARKS

Waikīkī Improvement Association recognizes the use of diacritical marks (i.e., glottal stop (ʻ), macron (ā) in place names of Hawaiʻi, such as Waikīkī and Kalākaua Avenue and will include them whenever possible. We also respect the individual use (or not) of these markings for names of organizations and businesses.

There will also be times when we may not have a chance to add or change the markings in all of the articles submitted and when that happens, e kala mai.