



WAIKĪKĪ IMPROVEMENT ASSOCIATION

Wikiwiki Wire

E-newsletter keeping you up-to-date on Waikīkī news, features, trends and more!



Contents

3

CHRISTMAS IN WAIKĪKĪ

13

WAIKĪKĪ BEACH COVID RESTRICTIONS

14

HONOLULU MARATHON GOES VIRTUAL

16

CENTENNIAL PARK UPDATES

17

THREE PEOPLE WHO MADE A MAJOR DIFFERENCE IN WAIKĪKĪ HAVE RETIRED

18

FIREWORKS CELEBRATION CANCELED

19

ALOHA KALIKIMAKA FROM THE WAIKĪKĪ COMMUNITY CENTER

20

WAIKĪKĪ STREET ACTIVITIES CANCELLED UNTIL FURTHER NOTICE

MORE WAIKĪKĪ FOOD, NEWS & EVENTS

BASALT HOLIDAY GIFT CARD SPECIAL

HAWAI'I CONVENTION CENTER LOOKS AHEAD TO 2021

IL LUPINO TRATTORIA & WINE BAR

HAPPY HOLIDAYS FROM THE ISLAND VINTAGE COFFEE 'OHANA

ENTERTAINMENT AT THE BEACH BAR UNDER THE BANYAN TREE AT THE MOANA

HAPPY HOLIDAYS FROM NOI THAI CUISINE

WAIKIKI BEACH WALK: TALK STORY

HOLOHOLO ON ONVER TO ROYAL HAWAIIAN CENTER FOR THE HOLIDAYS!

TANAKA OF TOKYO OFFERS TAKE OUT MENU AND OPEN FOR DINE-IN

WAIKIKI SHOPPING PLAZA REOPENING INFO

DIGI-VORTEX \$10K PIVOT GRANTS

MELE KALIKIMAKA

CHRISTMAS IN WAIKĪKĪ

Wish You Were Here . . .



International Market Place.



Dear Santa,
All I want for Christmas is to be in **Waikiki!**

MELE KALIKIMAKA



Kalakaua Avenue



Royal Hawaiian Center



MELE KALIKIMAKA



Moana Surfrider



MELE KALIKIMAKA



Waikīkī Beach



MELE KALIKIMAKA



Waikiki Beach Walk

MELE KALIKIMAKA



Blue Note Waikiki
Where the stars shine inside!

MELE KALIKIMAKA



Outrigger Waikiki



Hyatt Regency Waikiki



Princess Kaiulani

MELE KALIKIMAKA



MELE KALIKIMAKA



Hyatt Regency Waikiki



Royal Hawaiian Hotel



Royal Hawaiian Center

MELE KALIKIMAKA



Royal Hawaiian Center



Sheraton Waikiki

Waikiki Beach Service COVID-19 Operation Guidelines Under Development

The Waikiki Beach Special Improvement District Association (WBSIDA) is working in close partnership with the Department of Land and Natural Resources (DLNR) to develop Waikiki Beach-Specific COVID-19 Beach Operations Guidelines. The guidelines are meant to establish consistent beach operations standards for COVID-19 related public health and safety. The WBSIDA has conducted extensive research from around the world to learn what other municipalities have done and understand what might best-suited for Hawai'i. The Center for Disease Control as well as the City and County of Honolulu and the State of Hawai'i all have established guidelines for recreational and commercial beach use and the WBSIDA is developing the Waikiki Beach COVID-19 guidelines to be consistent with these.



The WBSIDA has facilitated an early draft of the guidelines based on international research and solicited feedback from the Waikiki Beach Service providers (Beachboys, hotel operators and

authorized service providers in Waikiki) to ensure they can operate within these guidelines. These Guidelines are for self-regulation and are not intended to be used for other regulatory enforcement. The Guidelines are currently being reviewed by the City and County of Honolulu and the DLNR and we are hopeful can be put into place as an additional safety measure shortly.





Honolulu Marathon Goes Virtual

The Tradition continues 1973- 2020

The **2020 Honolulu Marathon**, the fourth largest marathon in the U.S. has unfortunately been **CANCELLED**, but the tradition to experience the Spirit of Aloha in paradise continues. Runners who want to participate and stay active can enter the **Honolulu Marathon Virtual Beachfest, Start to Park 10K, or the Kalakaua Merrie Mile** in December 2020. By running the virtual race, you will earn your race shirts and medals. You can participate any time from December 1st to December 31st to finish the distances you've selected. Get ready to run!

For the **Honolulu Marathon Virtual Beachfest, the Start to Park 10K, and the Kalakaua Merrie Mile** events, the participant chooses where they will run or walk the race distance. You can run/walk in your own neighborhood or anywhere else that is safe...and in pandemic times, away from other people. Track your run/walk using a GPS tracker such as Strava, Runkeeper, Garmin, etc so you can submit evidence of your run.

All registered entrants in the 2020 Honolulu Marathon events, have received a unique code to transfer their entry to our virtual option, the Beachfest. All marathoners will have the option to complete the race over multiple days. Training has been hard this year and we honor the no time limit. You can complete the virtual race any time in December.



All virtual finishers will receive the finisher/race shirt and medals in the mail, as well as digital race bibs, certificates, a finishers magazine and more. You'll also get access to the festival area, where we will showcase Hawaiian music and cooking demos.

Should you choose not to use your comp code to participate in this years' virtual events, your entry will be automatically deferred to the 2021 events.

For residents of Japan, you will need to enter through the Japan Office entry site.

Information for the virtual race is now online. Please enter through the [Japan Office entry](#) .

For questions regarding the virtual race, please email virtual@honolulumarathon.org .

For general inquiries, email: info@honolulumarathon.org.

Centennial Park

December Update: Phase 1 Construction Is Complete

The decades-long vision of the late Bill Sweatt, his wife Helen and many Waikiki neighbors and businesses has finally become a reality! The stunning transformation of the site from a vacant lot to a beautiful green space is a source of pride for everyone involved.

Phase 1 construction, “making it green,” started in March and was completed this month. The lot is now home to trees large and small. The site is nicely landscaped with sod and new plants are taking root. The intense landscape management period began in November, and is essential to maintain the health and safety of the plantings.

The Rotary Club of Honolulu Centennial Park Committee is also working closely with the City & County to complete several necessary requirements, including work on the gates, so that the City can officially open the park for public use, prior to the start of Phase 2 construction. The current transition work requires cash — \$25,000 before December 31 — and your support and that of your friends, colleagues and neighbors is humbly appreciated.

Every gift will be DOUBLED through a generous Matching Challenge from seven members of the Rotary Club of Honolulu to reach the financial goal. Visit www.centennialparkwaikiki.org and click on the Donate button today to make your tax-deductible contribution. Centennial Park Waikiki is the result of dedicated individuals working together from many sectors of our community. Watch for updates about hands-on volunteer projects in the near future and sign up on the website by clicking the Get Involved tab.



Photo courtesy of William Kuencer (Waikiki resident and Park neighbor)

Your participation and donations will help to open Centennial Park Waikiki in 2021. Will you join us in creating an oasis of greenery for educational, cultural and family activities? Mahalo for your support!

Three People Who Made A Major Difference In Waikiki Have Retired



Michael Fenley, formerly of the International Market Place, was a director on the board of the Waikīkī Improvement Association and oversaw the 2014 construction and opening of the “New International Market Place.”



Fred Orr, formerly General Manager of the Sheraton Princess Ka'iulani, was Board Chair of the Waikīkī Improvement Association and most recently Chair of the Waikīkī Beach Special Improvement District Association.



Eric Masutomi, formerly Vice President of Planning with Outrigger Enterprises, was Board Chair of the Waikīkī Improvement Association, the Waikīkī Business Improvement District Association and the Chairman of the Waikīkī Transportation Stakeholders Oversight Committee (WTSOC) as well as serving in numerous other Waikīkī leadership positions. He was the project manager for the 2007 Outrigger Beachwalk Project.



Fireworks Celebration Canceled

The 2021 Annual New Year fireworks show sponsored by the members of the Waikiki Improvement Association and presented by the world-famous Fireworks by Grucci has been canceled due to the Covid19 Pandemic.

We all look forward to the fireworks show returning to light up the sky over Waikiki Beach next year!

Aloha Kalikimaka From The Waikiki Community Center

Did you know that the Waikiki Community Center is now also a “virtual community center”? In addition to its on-going preschool, food bank, rental assistance and other programs, the WCC now hosts on-line educational, exercise and social networking events?! From virtual Zumba to yoga, storytelling and even crafts there’s something for every age from keiki to kupuna to participate in.

<https://www.waikikicommunitycenter.org/upcoming-live-virtual-events>



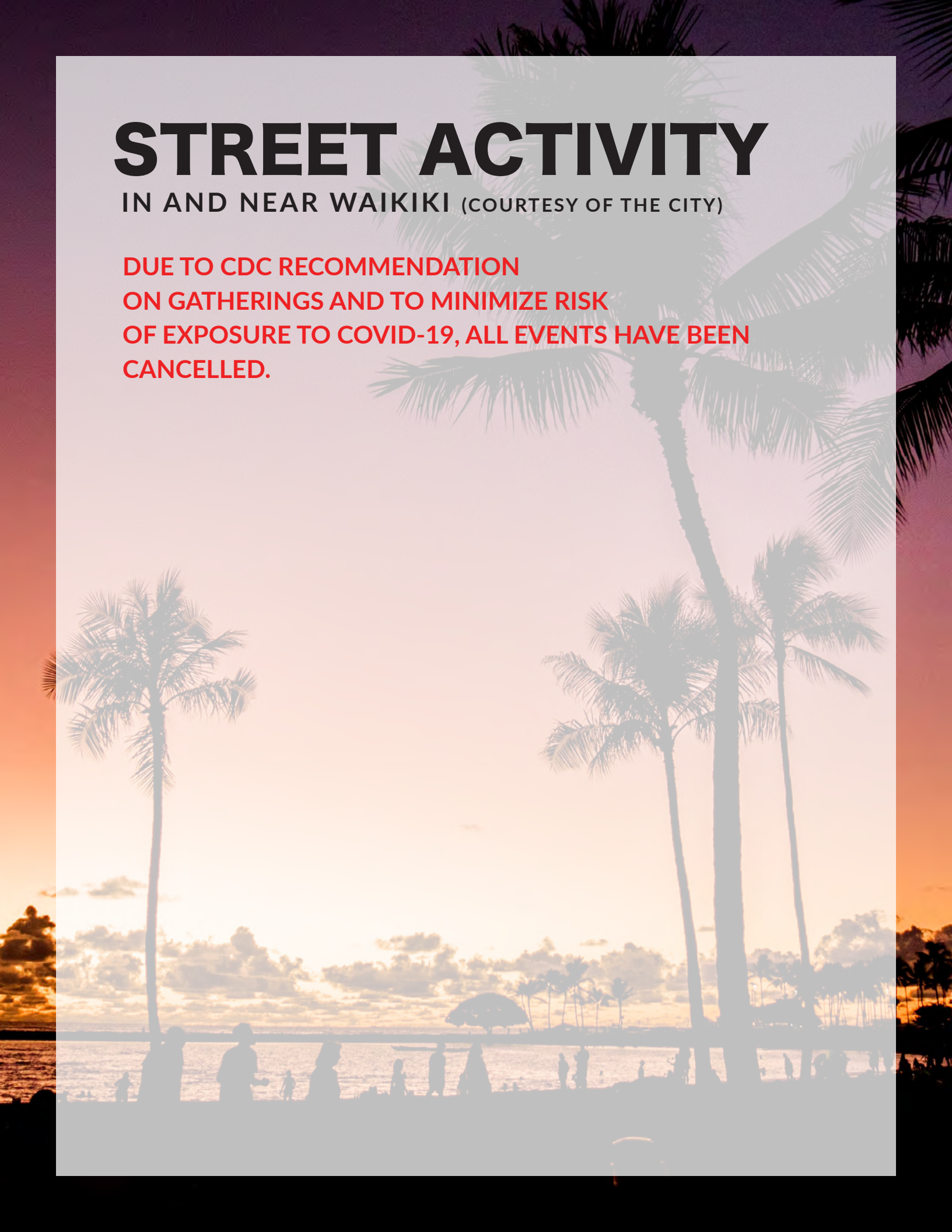
Waikiki Community Center also held its first virtual Waikiki Lights fundraiser November 12, 2020, in lieu of its annual in-person gala. The WCC expresses their appreciation and deepest mahalo nui to the community for making the program such a success. Due to the overwhelming support, WCC can continue its mission of providing critical services and education during COVID-19 and beyond.

Visit www.waikikicommunitycenter.org or follow on Facebook <https://www.facebook.com/waikikicommunitycenter> to learn more.

STREET ACTIVITY

IN AND NEAR WAIKIKI (COURTESY OF THE CITY)

**DUE TO CDC RECOMMENDATION
ON GATHERINGS AND TO MINIMIZE RISK
OF EXPOSURE TO COVID-19, ALL EVENTS HAVE BEEN
CANCELLED.**



BASALT

We are open for indoor and outdoor dining plus take-out!



OPEN DAILY: 8 am - 9 pm
Breakfast, Lunch, Happy Hour & Dinner

BASALT

Holiday Gift Card Special

- NOW THRU DECEMBER 31, 2020 -

**PURCHASE \$100
GET \$20 FREE**





HAWAII CONVENTION CENTER LOOKS AHEAD TO 2021

At the Hawai'i Convention Center, 2020 has been an unprecedented year of working to adapt to a "new normal" as the COVID-19 pandemic has disrupted business across the state.

While we are now focused on working to safely welcome visitors back with our legendary aloha spirit, we have spent the past 9 months developing and implementing industry-leading health and safety measures.

This includes:

- Enhanced cleaning and sanitation and the use of electrostatic sprayers;
- The installation of thermal cameras and touch less temperature checks;
- The use of personal protective equipment (PPE);
- Modified food and beverage operations, including fresh, individually packaged meals and snacks;
- Increased availability of hand-sanitizer dispensers;
- Contactless transactions, special signage and social-distancing guidelines.

We have also remained open for critical state services such as unemployment claims processing, COVID-19 contact tracing, and vote counting, while developing new virtual meetings packages to offer guests the convenience of attending meetings remotely.

In addition, we took advantage of these quieter times by conducting key improvements, repairs and upgrades throughout the building, allowing for the expedited completion of maintenance projects and the implementation of new safety protocols.

As the State of Hawai'i opens up additional travel options, we are following the recommendations of public health officials and evaluating 2021 opportunities to provide meeting spaces and event options in a safe, open-air environment.

The actions we take today to protect our collective health and safety will help ensure a brighter year to come. We look forward to seeing you all (in person) once again. Have a safe and happy holiday season.

For more on the Center's new health and safety program, visit www.HawaiiConvention.com

HAWAII

CONVENTION CENTER




MEETINGS RECOGNITIONS

On Nov. 12, 2020, the Center's General Manager Teri Orton was named Hospitality Executive of the Year by Pacific Edge, a Hawai'i business and lifestyle magazine, in its 10th-annual Business Achievement Awards.

Nominations were judged by an independent panel comprised of seven esteemed members of the business community, and winners were announced in 12 categories.

Honolulu was also included on meetings company Travmar's November list of the "Top 25 Convention Cities For 2020," judged by walkability, affordability, safety, exciting tourism options and city assets among 166 cities ranked nationwide.



-  @HawaiiConventionCenter
-  @HIConventionCtr
-  @HawaiiConventionCenter



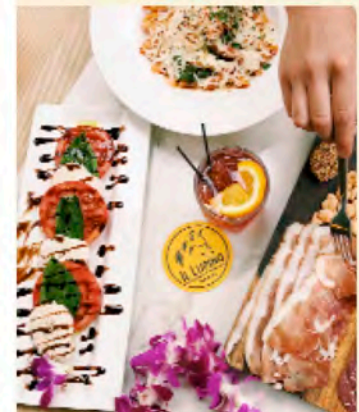
HAPPY Holidays

Join us for all your
Holiday Celebrations!

IL LUPINO

TRATTORIA & WINE BAR

Holidays are always a special time at Il Lupino. From a delightful breakfast to an authentic Italian lunch and dinner featuring fresh, local produce, the highest quality imported ingredients, fresh pasta made in-house daily, exquisite desserts, and an award-winning wine list, Il Lupino offers our guests the finest dining experience in Waikiki! We wish you all a Happy & Safe Holiday Season!



Dine-In • Take-Out • Delivery
Open Daily 11:00am-10:00pm*
Happy Hour 12:00-6:30pm
*CURRENT TIER 2 HOURS

Royal Hawaiian Center
Bldg B, Level 1
3 Hours Free Validated Parking

808.922.3400
illupino.com



HAPPY holidays

FROM THE ISLAND VINTAGE COFFEE 'OHANA

WE'VE GOT EXCITING NEWS!



ISLAND VINTAGE WINE BAR has been nominated for the USA TODAY 10Best Readers' Choice Awards for Best New Restaurant in the Country for 2020!!! This is a huge honor to be included among only 20 restaurants in the USA, and we are truly grateful and humbled. Please help us out by voting so we can represent Hawai'i proudly! You can vote once per day through 12/21/20, and check our progress. Mahalo nui loa for your vote!



www.10best.com/awards/travel/best-new-restaurant-2020/



Give your loved ones the gift of farm-to-table deliciousness. The Island Vintage Coffee Gift Card may be used at all of our locations. Mahalo nui loa for your patronage!

ISLAND VINTAGE COFFEE*
808.926.5662
Daily 6:00am - 10:00pm
islandvintagecoffee.com
[@islandvintagecoffee](https://www.instagram.com/islandvintagecoffee)
[@handcraftedaloha](https://www.instagram.com/handcraftedaloha)



ISLAND VINTAGE WINE BAR
808.799.9463 (WINE)
Mon-Thur 5:00pm - 10:00pm
Fri-Sun 10:00am - 10:00pm
islandvintagewinebar.com
[@islandvintagewinebar](https://www.instagram.com/islandvintagewinebar)



ISLAND VINTAGE SHAVE ICE
808.922.5662
Daily 11:00am - 9:00pm
[@islandvintageshaveice](https://www.instagram.com/islandvintageshaveice)

*Island Vintage Coffee also has locations at Ala Moana Center, Hale'iwa Store Lots, Ko Olina Station, Maui - and Hawai'i Island opening soon!

Royal Hawaiian Center • Bldg C, Level 2 • 3 hours free parking through 12/31/20

islandvintagecoffee.com • islandvintagewinebar.com •





Christian Yrizarry



Jeremy Hirokawa



Johnny Valentine



Eric Lee



Jeremy Cheng



Alex Oasay



Live, solo acts nightly under the Banyan Tree, 5 to 7 p.m.

HAPPY
holidays

HALE AINA GOLD AWARD WINNER
for "Best Thai Food" 2019 & 2020

PRIVATE PARTIES WELCOME
with Social Distancing,
Max 5 guests per table

HOLIDAY COCKTAILS \$16
Peppermint-fini
Gingerbread Brew

GIFT CARD PROMOTION
For every \$100 in Noi Thai
Gift Cards purchased through
12/31/20, receive a \$10 gift
certificate as our gift.

TAKE-OUT BENTOS
Our popular \$10 and \$20 bentos
are still available throughout the day.
Call 808.664.4039 or order online
at noithaicuisine.com

DINE-IN • TAKE-OUT
CURBSIDE PICK-UP
DELIVERY • CATERING

Noi
THAI
CUISINE



Socially-Distanced Parties



Royal Hawaiian Center • Bldg C, Level 3
Open Daily 11:00am - 10:00pm
Lunch • Happy Hour • Dinner
noithaicuisine.com • [@noithaicuisine_hawaii](https://www.instagram.com/noithaicuisine_hawaii)
808.664.4039



Talk Story

WAIKIKIBEACHWALK.COM |   

Aloha from Waikiki Beach Walk,

November
24
2020

This year we are thankful to be able to share Hawaiian music with you every Tuesday. While so much of our world has changed this year we are thankful that Waikiki Beach Walk is still able to connect with you through mele and share our aloha through Ku Ha'aheo on our plaza stage from 4:30p.m. – 6:00 p.m. If you're around Waikiki Beach Walk come and stop by and make sure to wear your mask!

Join us in person as you stroll through Waikiki Beach Walk or from the comfort of your own home on our [Facebook](#) or [Instagram](#) accounts!



Waikiki Beach Talk

If you haven't stopped by Waikiki Beach Walk recently here's the talk of the town.



Free Hula Classes Every Sunday Morning

Enjoy a morning hula class out on Waikiki Beach Walk's Plaza. This hour-long class is reserved up to 15 individuals, all ages and skill levels welcome. Masks are mandatory and social distancing guidelines in place. Classes offered every Sunday from 9:00 a.m. – 10:00 a.m. through 2020.

[Please RSVP to register for a class.](#)



Roy's Waikiki Now Open

In time to enjoy their Thanksgiving Day menu, Roy's Waikiki is now open 4:30 p.m. – 9:30 p.m. daily. Contact (808) 923-7697 for general inquires and reservations.

Weekly Favorite: [Plumeria Signature Diffuser](#), [SoHa Living](#)

If you have a family member who may be vision or hearing impaired get them a gift they can still enjoy such as this Plumeria Diffuser from SoHa Living which comes in 10 other unique fragrances.



HOLOHOLO ON OVER TO ROYAL HAWAIIAN CENTER FOR THE HOLIDAYS!



Head on over to the heart of Waikiki to Royal Hawaiian Center to sleigh the holidays with a snowball of shopping and dining options, visits with Santa and Mrs. Claus, and a special gift with purchase offer you don't want to miss!



Saint Nick

Santa and Mrs. Claus helped us kick-off the season with the annual lighting of the holiday tree at The Royal Grove on November 25. Their virtual visit from the North Pole workshop was streamed live around the globe on our Facebook page and included live Hawaiian entertainment by Malu Productions and a snowfall of fresh, local flower petals. The dazzling 34-foot tree featuring Hawaiian décor including beautiful palaka ribbons, glittered mesh plumeria, red anthuriums, monstera leaf designs and more, makes a stunning backdrop for those holiday elves!



Tree Lighting



Jolly Old St. Nick and his missus will be live and in person for Royal Santa Saturdays! On Saturdays, December 5, 12, and 19, from 4:00 p.m. – 7:00 p.m., guests are invited to take FREE socially-distanced photos with Santa and Mrs. Claus in a special holiday window located across from The Cheesecake Factory on Level 1 of Building C, using their own camera, smart phone or other digital device. No reservations are required.



Be sure to like Royal Hawaiian Center on Facebook for our special 12 Royal Days of Gifting. Each day from December 12 through 24, we'll be highlighting stories of our merchants, restaurants, specialty stores, and Hawaiian heritage, history, and culture! Watch out for how to enter to win our daily giveaways. All entries will also be eligible to win our Grand Prize, which will be announced on Christmas Day. Don't miss a day or yule be sorry!

Guests at Royal Hawaiian Center will enjoy 3 hours of free validated parking with any purchase.



HOLOHOLO ON OVER TO ROYAL HAWAIIAN CENTER FOR THE HOLIDAYS!



But wait, there's myrrh! Royal Hawaiian Center is spreading more holiday cheer with **two holiday gift with purchase promotions!** From November 27, 2020, through January 10, 2021 guests who spend \$25 or more at our of restaurants, Pā'ina Lanai eatery, Waikīkī Food Hall, or specialty food merchant, will get a free shoe tote bag. Additionally, guests who present \$250 in combined receipts will receive a special limited-edition gift with purchase. Receipts can be redeemed at Helumoa Hale Guest Services.



Happy Holidays from Royal Hawaiian Center! We can't wait to welcome you with good tidings and holiday cheer during your next visit.



LOOK OUT FOR LUCKY BAGS IN 2021!

Royal Hawaiian Center is bringing good luck to customers in the New Year with the return of **Lucky Bags** in 2021! From Friday, January 1, 2021 through Sunday, January 3, 2021, participating retailers and restaurants will offer significant discounts on lucky bags sold for half their retail value.



The **Lucky Bag** tradition is a shopper's dream come true, allowing people to purchase a "lucky bag" for half of what it's worth. The fun part? The bag's contents are kept secret until it's purchased! According to Japanese superstition, people's Lucky Bags reflect the luck and good fortune they'll enjoy in the year ahead. Royal Hawaiian Center's bags range from a few dollars to a few hundred, depending on the store. While typically held only on New Year's Day, this year shoppers will have a few extra days to try their luck!

For the most up-to-date list of participating merchants, visit RoyalHawaiianCenter.com.





TANAKA OF TOKYO
JAPANESE STEAK & SEAFOOD
 Honolulu Star Advertiser
 Best Japanese Teppanyaki Steakhouse
 8th Consecutive Year!



Tanaka of Tokyo Central
NOW OPEN FOR DINE-IN!
 CALL 808 922-4702 for
 Reservations
 Take-out Also Available!

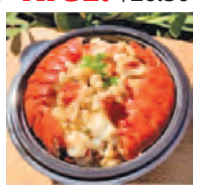
TAKE-OUT MENU

Our mission is to provide the highest quality steak and seafood with impeccable service. We are excited to share our New Value Menu - the same delicious food at a significantly reduced price!



LOBSTER FRIED RICE! \$26.50

For A Limited Time Only,
 Come Try Our Decadent
 Lobster Fried Rice - ½ Lb.
 Of Succulent, Cold Water
 Lobster On A Generous
 Portion Of Our Famous
 Teppan Garlic Fried Rice!



While Supplies Last

BENTOS

- ① **Tanaka Sirloin** **\$21.50**
- ② **Salmon** **\$19.75**
- ③ **Scallop** **\$18.25**
- ④ **Chicken Teriyaki** **\$16.50**
- ⑤ **Garlic Shrimp** **\$17.25**

*Includes: Salad, Steam Rice, Tsukemono,
 & our Signature Ginger & Mustard Sauces*

APPS / ADD-ONS

- Fried Rice** **\$4.20**
- Teppan Veg** **\$4.00**
- Lobster Tail** **\$16.00**
- Shrimp** **\$7.40**
- Chicken Teriyaki** **\$10.00**



Menu Subject To Change

"Customer safety is our number one priority and our team is continuously working hard to ensure that all Restaurant Reopening Guidelines established by the City and County of Honolulu are being followed meticulously! Additionally, we are excited to share that Tanaka of Tokyo is one of the safest restaurants to dine in due to our extensive ventilation system which exhausts and exchanges dining room air every 2 minutes – almost as good as dining outside!!! The power of our exhaust fans with ducts above each cooking station provides a combined 27,000 CFM of exhaust air while fresh air is being drawn in at a rate 15 times more than Department of Health Standards!"

Take-Out 12-2:00pm and 4-7:30pm • Dine-In open from 5:00pm
Waikiki Shopping Plaza, 2250 Kalakaua Ave. 3F
Tel 922-4702 • www.tanakaoftokyo.com

Waikiki Shopping Plaza REOPENING INFO

At Waikiki Business Plaza & Waikiki Shopping Plaza, cleanliness and sanitation are always top-of-mind requirements. In light of recent events surrounding COVID-19, we are committed to increasing our cleaning standards for the health and safety of our visitors.

Some of these efforts include:

- All common-area furniture and surfaces are sanitized multiple times per day.
- Any employees who are sick or display flu-like symptoms are required to stay home. Employees must be cleared by a doctor and have a doctor's note to return to work.

Shopping & Dining

LULULEMON

Mon - Fri 9am - 7pm
Sat & Sun 9am - 6pm
(808) 923-9583

ARMANI EXCHANGE

Daily
11am - 7pm
(808) 923-3340

BELLE VIE

Daily
11am - 3pm
(808) 926-7850

H&M

Mon - Sat 11am - 7pm
Sun 12pm - 7pm
(855) 466-7467

SEPHORA

Daily
12pm - 6pm
(808) 923-3301

TANAKA OF TOKYO

Daily
5pm - 8:30pm
(808) 922-4702

USPS

Mon - Fri 9:30am - 5pm
Sat 10am - 2pm
(808) 973-7515

Operations



BUILDING INFO

Waikiki Shopping Plaza parking lot & building operating hours are 6:30am - 7pm. Waikiki Business Plaza parking lot hours are 6:30am - 7pm.

The Waikiki Business Plaza & Waikiki Shopping Plaza Management Office hours are from 9am - 4pm.

Parking

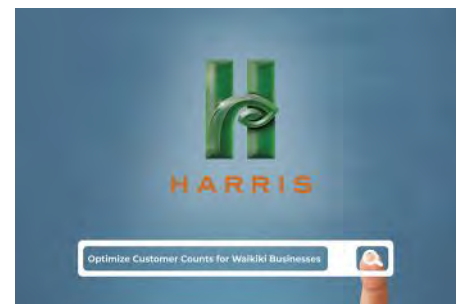


WAIKIKI PARKING RATES

\$5 for up to 5 hours of parking;
\$10 for up to 10 hours of parking;

Available in the Waikiki Shopping Plaza and Waikiki Business Plaza during parking lot operating hours.

Specials



HARRIS AGENCY

Receive a complimentary Yelp and digital profile evaluation for all businesses from the experts!

For more details or to schedule an appointment, contact Jana at janas@harris-agency.com or call (808) 946-4525.



Our **website** and **digital marketing upgrades**
may be eligible for
\$10K Pivot Grants
while funds last

Check your eligibility at www.hawaiibizpivot.org

Online Ordering • Website Hosting, Development & Performance
Paid Digital Media • Social • Hawaii-Based Content Creation

Call us today to learn more
janas@harris-agency.com -or- (808) 946-4525



WAIKĪKĪ IMPROVEMENT ASSOCIATION

Wikiwiki Wire **GUIDELINES**

Wikiwiki Wire is published on the first Friday of each month. If you would like to share your news with other members, please send your info to: editor@waikikiimprovement.com.

Submission Deadline

Waikīkī-related news and information submitted by members (or their PR agencies) for the Wikiwiki Wire newsletter should be received no later than **5 PM THURSDAY, ONE WEEK PRIOR** to the newsletter's publication and distribution on the first Friday of each month.

News & Stories: Please submit any Waikīkī-related stories/articles as a Word doc and include photos to accompany stories/ articles. For best results, please upload photos as a separate JPEG attachment - maximum 2 MB each image.

Flyers/PDFs: Waikīkī-related flyers are welcome but must look like advertising flyers and not press releases. Please format flyers to an 8.5" x 11" size and submit them in a PDF format.

Press Releases: Please submit Waikīkī-related press releases as a Word doc. Press Releases that do not fit within one page of the Wikiwiki Wire newsletter will be returned for editing.

Photos: For best results, please upload photos as a separate JPEG attachment - maximum 2 MB each image.



WAIKĪKĪ IMPROVEMENT ASSOCIATION

We are a cross-section of business, government and the community; our members care about the future of this special place - Waikīkī.

For more than 40 years, the Waikiki Improvement Association has remained true to its objective: to improve, enrich and beautify Waikīkī for the benefit of residents and visitors alike and to promote conditions conducive to the economic and cultural good and for the betterment of the entire community.

HAWAIIAN DIACRITICAL MARKS

Waikīkī Improvement Association recognizes the use of diacritical marks (i.e., glottal stop (ʻ), macron (ā) in place names of Hawaiʻi, such as Waikīkī and Kalākaua Avenue and will include them whenever possible. We also respect the individual use (or not) of these markings for names of organizations and businesses.

There will also be times when we may not have a chance to add or change the markings in all of the articles submitted and when that happens, e kala mai.