



WAIKĪKĪ IMPROVEMENT ASSOCIATION

# Wikiwiki Wire

*E-newsletter keeping you up-to-date on Waikīkī news, features, trends and more!*





# Contents

---



4

**CONSTRUCTION ON THE NEW  
ROYAL HAWAIIAN GROIN  
COMPLETED**

6

**WAIKĪKĪ IMPROVEMENT  
ASSOCIATION 2020  
HO'OWEHIWEHI AWARDS**

13

**CENTENNIAL PARK WAIKĪKĪ  
SUMMER UPDATE**

14

**WAIKĪKĪ BEACH HULA SHOW -  
SUSPENSION EXTENDED**

15

**WAIKĪKĪ STREET ACTIVITIES  
CANCELLED UNTIL FURTHER  
NOTICE**

# MORE WAIKĪKĪ FOOD, NEWS & EVENTS

---

SPITFIRE ROTISSERIE & FLATBREAD

BASALT DAILY DRINK SPECIALS & HAPPY HOUR

BILLS HAWAII - KAMA'AINA SPECIALS

HAWAI'I CONVENTION CENTER  
IMPLEMENTS COVID-19 HEALTH &  
SAFETY PROGRAM

IL LUPINO - OPEN FOR DINE IN AND TAKE  
OUT

ISLAND VINTAGE COFFEE, ISLAND  
VINTAGE WINE BAR, & ISLAND VINTAGE  
SHAVEICE - TEMPORARY HOURS , QUICK  
TIP AND MORE

NOI THAI CUISINE KAMA'AINA SPECIALS,  
\$20 TO-GO BENTOS, & MORE

WAIKIKI BEACH WALK PLAZA - KA LEI  
HULA - FREE HULA CLASSES

ROYAL HAWAIIAN CENTER - LUXE  
LUGGAGE BRAND RIMOWA NOW OPEN &  
REDISCOVER WAIKIKI THIS SUMMER

TANAKA OF TOKYO JAPANESE STEAK &  
SEAFOOD

WOLFGANG'S STEAKHOUSE DINE IN OR  
TAKE OUT & \$12.95 LUNCH SPECIALS

\$5 & \$10 FLAT PARKING RATES IN THE  
WAIKIKI BUSINESS PLAZA & WAIKIKI  
SHOPPING PLAZA

HARRIS MARKETING &  
COMMUNICATIONS AGENCY - YELP &  
DIGITAL PROFILE EVALUATION



# Construction on the New Royal Hawaiian Groin Completed

---



“The Waikīkī Beach Special Improvement District Association (WBSIDA) is pleased to announce that the long-awaited Royal Hawaiian Groin project has been completed! “WBSIDA is proud to be a partner on this important project and be at the forefront of forward-looking beach improvement projects currently underway in Waikiki.” said Rick Egged, President of the Waikīkī Beach Special Improvement District Association.

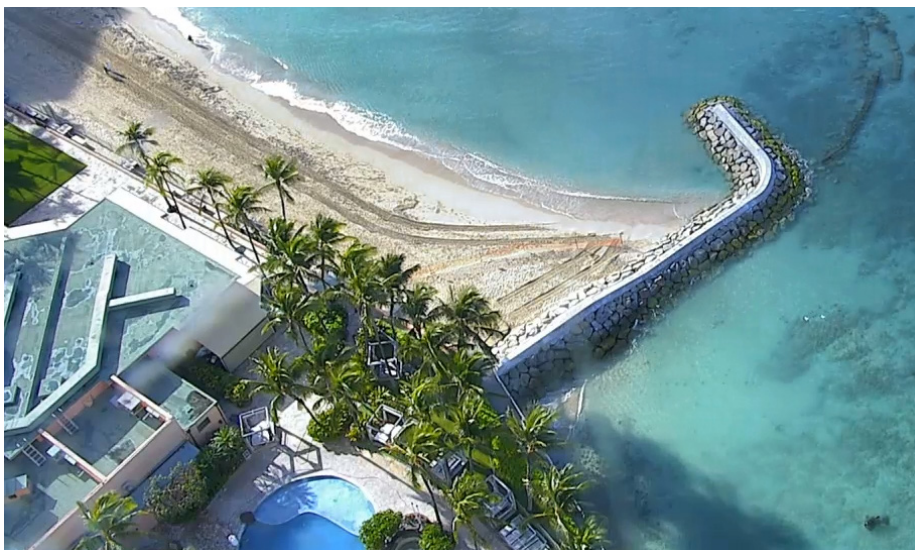


The construction of the new groin took 10 weeks and the \$1.5 million State project was funded through a public-private partnership with WBSIDA which paid for 50 percent of the project. The University of Hawai'i Sea Grant College Program provided public outreach and coordination for the project and has been involved with project monitoring and evaluation.

On the week of July 31, 2020, construction crews de-mobilized the equipment and finished clean-up of the construction and staging areas. The new sloping rock rubble mound groin is 180 feet long, between 30 and 40 feet wide and ranging in height from +4.0 feet above mean sea-level at the seaward end to +9.0 feet above mean sea-level at the landward end. The design objective of the new groin is to stabilize the beach fronting the Royal Hawaiian Hotel and eventually restore the prior 2012 shoreline position.



Sam Lemmo, the Administrator of the DLNR Office of Conservation and Coastal Lands (OCCL) explained, "This is the first construction of a permanent structure on Waikīkī Beach in 50 years and highlights the need to continue to make much-needed improvements to Waikīkī Beach. This project is the first in a series of improvement projects planned for Waikīkī that will transform some of the most severely impacted segments of Waikīkī Beach, creating more stable beaches and result in a more resilient and robust economy and community."



WBSIDA was created on May 18th, 2015 by city ordinance to preserve and restore Waikīkī Beach and to provide consistent and credible management for future beach revitalization. Creating of a special improvement district is one of the most effective ways of forming and funding public-private partnerships to bring together resources to tackle especially complicated challenges.

Additional details of the project and groin are available at: <https://www.wbsida.org/projects-royalhawaiiangroin>



# Waikīkī Improvement Association

2020 Ho`owehiwehi Awards



## Ho`owehiwehi: To adorn, decorate or beautify....

Waikīkī Improvement Association honors those in the community whose projects possess the key components of the Revitalization of Waikīkī plan which began in 2001.

**HANA NUI:**

New or Major Projects

**HANA IKI:**

Renovation Projects

**PILI HONUA:**

Green Projects

**GEORGE S. KANAHELE:**

Ho`okipa Award



## Four Award Categories:

### 1 - Hana Nui Award

Aimed at NEW or MAJOR reconstruction, development, transformation or project(s). Recognizes a company, organization or group for its significant contribution toward the enduring revitalization of Waikīkī's physical, cultural and/or economic environment. Represents consistent, ongoing achievements, body of work or project completed between September 1, 2019 and August 31, 2020.

### 2 - Hana Iki Award

Aimed at RENOVATION projects that enhance structures or facilities. Recognizes a company, organization or group for a significant contribution toward the enduring revitalization of Waikīkī's physical, cultural and/or economic environment. Represents improvements to a particular structure or environment completed between September 1, 2019 and August 31, 2020.

### 3 - Pili Honua Award

This award category recognizes green, earth-friendly projects or people!

This category recognizes new and renovated projects, along with hotel operations, that embody the goals and aspirations of living GREEN in Hawai'i that help to preserve our precious ʻāina and saves our valuable resources. Please list all projects that address your "GREEN" footprint in a bullet point list, fill out attached form and send in.

All projects are eligible for the Pili Honua award.

Please list all projects that address your "GREEN" footprint in a bullet point list, fill out attached form and send in.

### 4 - DR. GEORGE S. KANAHELE

Highly regarded historian Dr. George S. Kanahele was the driving force in a movement to restore a sense of "Hawaiianess" to Waikīkī. He founded the Native Hawaiian Hospitality Association, and helped numerous corporate clients integrate Hawaiian values into their management and customer relations practices. This award recognizes an individual, business, organization or group for an outstanding singular action, event or for consistent, enduring performance in keeping with the legacy of the late George Sanford Kanahele.

The award is given to a person, project or place that best represents the values of aloha and ho ʻōkipa (hospitality) embodied in Dr. Kanahele's life work.



## George S. Kanahele Ho`okipa Award

This award covers a wide range of categories, from social and cultural endeavors to health, education and communications programs. Emphasis is on personal commitment and excellence. Can be a person, project or place.

There is no formal application process, all recommendations are welcomed.

Evaluation criteria:

- Demonstrates a complete understanding of the guest-host-place relationship that gives priority to the place and whose qualifying actions can be clearly cited as having contributed to making Waikīkī a better place
- Demonstrates unconditional aloha to a stranger without expectation of reward
- Demonstrates or perpetuates the concept that acts of hospitality towards strangers are self dignifying and noble, bringing pride and dignity to the place and its people
- Makes a significant contribution toward restoring Hawaiianness to Waikīkī
- Makes a significant contribution toward the perpetuation of Waikīkī as a place of spiritual healing
- Makes a significant contribution toward perpetuating the history and culture of Waikīkī through educational programs
- Fulfills and advances the principles of Ho`okipa and the vision of the Waikīkī Improvement Association

## Selection Process for all Awards

A committee of professional planners and executives will be responsible for selecting award recipients. The Awards Committee invite submissions in the four categories listed in this notice. More than one recipient may be selected in any given year.

The Ho`owehiwehi Awards, will be presented at the Waikīkī Improvement Association's Annual Meeting  
on  
October 28, 2020  
4:00-6:00 PM

**Due to COVID-19 current restrictions - more information will be given out at a later date.**

Recipients will be asked to provide (12-15) concise bullet points to identify the highlights of their project accompanied by (12-15) matching photos.



**HO`OWEHIWEHI NOMINATION FORM**  
PLEASE CHECK ONE

- HANA NUI**
- HANA IKI**
- HO`OKIPA AWARD**
- PILI HONUA**

<b>NOMINEE:</b>		
Phone Number:	WORK:	CELL:
Project Name:		
Nominator's Name:		
Signature of Nominator:		

After filling out the above information please attach a separate page that includes the following:

Explain why this nominee should win the award in the respective category and how the nominee relates to the evaluation criteria.

List items or materials that are being submitted in support of this nomination along with (12-15) photos and (12-15) concise bullet points that highlight your project.

Please attach a one page abstract or summary of the nomination. Also, summarize the nominee's special contributions to planning in Waikīkī.

**APPLICATIONS DUE: SEPTEMBER 7 , 2020**

**Email, mail or deliver applications to:**  
**The Ho`owehiwehi Awards**  
 Waikīkī Improvement Association  
 2250 Kalakaua Avenue, Suite 315  
 Honolulu, Hawaii 96815  
[joann@waikikiimprovement.com](mailto:joann@waikikiimprovement.com)

**Nomination(s) Checklist**

- ✓ Project completed by: August 31, 2020
- ✓ Completed nomination form, and one-page summary.
- ✓ Supplemental materials: Planning documents, publications, maps and other supporting material to be submitted for consideration to the Awards Committee.
- ✓ (12-15) Photos along with concise bullet points that summarize your photos and project.

**PLEASE SUBMIT  
ALL ITEMS  
ELECTRONICALLY**

**PHOTOS SHOULD BE  
ATTACHED TO  
SUBMISSION - NO PDF'S**





# PAST HO`OWEHIWEHI AWARD RECIPIENTS

## “HANA NUI”

2001	Kalia Tower
2003	2100 Kalakaua
2005	ABC store at Kuhio and Kaneikapolei Kūhiō Avenue Sidewalks
2007	Waikīkī Beach Walk Center of Waikīkī, 2284 Kalākaua
2009	Grand Waikikian
2011	Hard Rock Cafe - Beachwalk Waikīkī Shopping Plaza - Expansion Sheraton Waikīkī The Modern Honolulu Trump International Hotel
2013	Tanaka of Tokyo
2014	Hokulani Waikīkī - Hilton Grand Vacations Club
2015	Hyatt Regency Waikīkī- Room Renovation SKY Waikīkī
2016	International Market Place Ritz Carlton Residences Waikīkī Beach
2017	Dukes Lane Market & Eatery The Laylow Hotel Hyatt Centric Waikīkī Beach The Grand Islander Hilton Grand Vacations
2018	`Alohilani Resort Waikīkī Beach
2019	Aqua Aston Hospitality “Espacio” Ritz-Carlton Residences - Waikīkī Beach - Diamond Head Tower The All-New “Waikīkī Beachcomber” By Outrigger

# PAST HO`OWEHIWEHI AWARD RECIPIENTS

## “HANA IKI”

2001	DFS Galleria
2005	Radisson Prince Kuhio - Lobby Fort DeRussy - Force Protection Wall
2007	Royal Hawaiian Center Westin Moana Surfrider - Lobby The Tapa Makers Statues
2009	Royal Hawaiian Hotel - Restoration Duke Paoa Kahanamoku Lagoon Outrigger Reef on the Beach
2011	The Royal Hawaiian Hotel
2012	Hilton Hawaiian Village - Coral Ballroom Hyatt Regency Waikīkī - Third Floor Renovation Halekulani Renewal
2013	Waikīkī Shopping Plaza - Third Floor Renovation Moana Surfrider - Tower Renovation
2014	Waikīkī Business Plaza, Facade Improvements Hilton Hawaiian Village, Rainbow Mural
2015	Straub Doctor's on Call Clinic Waikīkī
2016	Hilton Garden Inn Waikīkī Beach Noi Thai Cuisine
2018	TsuruTonTan Voyager 47 Club Lounge
2019	Hale Koa Hotel “Aquatics Complex” & “Maile Tower Renovation” Island Vintage Wine Bar



“PILI HONUA”

- 2012 Hyatt Regency Waikīkī - Green Team
- 2013 Pacific Beach Hotel - Guest Water Bottle Program
- 2015 Green Team, Hyatt Regency Waikīkī
- 2016 International Market Place
- 2017 Bills Hawaii - Bills Green Mission  
Hale Koa Hotel - “Green” Projects & Operations
- 2018 Hyatt Regency Waikīkī
- 2019 Embassy Suites Waikīkī Green Projects  
Hale Koa Hotel “Green” Projects & Operations



George S. Kanahele  
HO`OKIPA AWARD  
RECIPIENTS

- 2001 Peter Apo
- 2003 Waikīkī Historic Trail
- 2005 Peter Schall
- 2007 Visitors Aloha Society of Hawai'i
- 2009 Mohalapua O 'Ilima, The 'Ilima Hotel
- 2011 Outrigger Ho`okipa Training “APEC”  
Royal Hawaiian Center  
“Performing Arts”
- 2012 ClimbHI L.E.I.
- 2013 Hi`inani Papapa-Blakesley
- 2014 Royal Grove Improvements,  
Royal Hawaiian Center
- 2015 Duke's OceanFest  
Outrigger Duke Kahanamoku Foundation
- 2016 AccesSurf Hawai'i  
Hilton Hawaiian Village  
History Wall  
International Market Place
- 2017 Visitor Aloha Society of Hawai'i
- 2018 Hawai'i Tourism Authority  
Hyatt Regency Waikīkī
- 2019 Kūhlo Beach Hula Show  
Hawaiian Airlines

# Centennial Park Waikiki Summer Update

July 29th marked 12 months since Centennial Park's official groundbreaking and blessing. On-site construction is well underway, the walking path is looking great, and ground preparation continues despite a temporary pause in July.

Why the pause? Our topsoil source was not adequate for the amount of ground fill required. The search for alternative sources of soil has been more challenging than anticipated, and we are now testing samples from the 7th and 8th possible locations. Once the soil is tested, approved and set in place on-site, the large Monkey Pod trees can be planted.



## New Renderings: Updated Vision

Slideshow: [Click here](#) to see ten new renderings that envision Centennial Park Waikiki. *Rendering graphics donated by local architecture firm G70.*

Phase 1 includes clearing and grading the site, planting of most major trees, the landscaped gardens and sod, pouring and finishing the concrete interior

walkway, installing piping for underground electricity and sprinklers, and completing a raised platform for performances. All of this work is expected to be substantially finished by November 2020. [Click here](https://shar.es/abtVmZ) to see the photo album (<https://shar.es/abtVmZ>). Even better, take a walk down Seaside or Royal Hawaiian Avenue and see the construction progress for yourself!

We have made significant fundraising progress to date. August marks the start of our expanded 10-week fundraising effort to secure \$90,000 more by September 30th, which is necessary to complete Phase 1. Centennial Park has moved forward due to the hard work of many and fiscal support by generous individuals, businesses and Rotary Clubs.

Thank you all for your support! If you would like to help with a donation or volunteer, please go to [www.centennialparkwaikiki.org](http://www.centennialparkwaikiki.org).



# *Waikiki Beach Hula Show*

## AT THE KUHIO BEACH HULA MOUND

KUHIO BEACH HULA SHOW

**THE KUHIO BEACH HULA SHOWS ARE SUSPENDED UNTIL FURTHER NOTICE, ON ADVICE OF THE HAWAII STATE HEALTH DEPARTMENT AND THE MAYOR'S OFFICE OF THE CITY AND COUNTY OF HONOLULU, FOR PUBLIC HEALTH AND SAFETY DUE TO THE CORONAVIRUS PANDEMIC.**

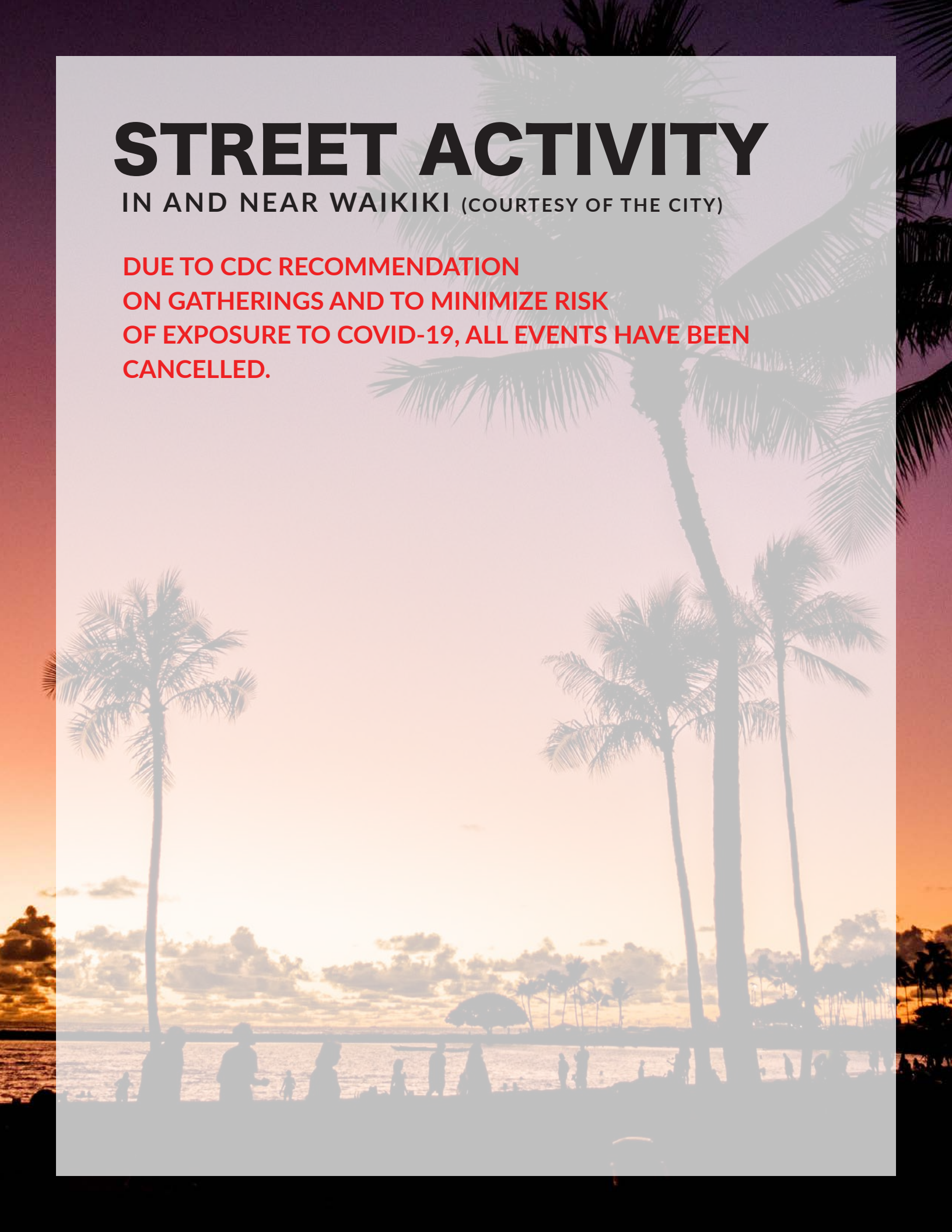
The Kuhio Beach Hula Show is held regularly Tues-Thur-Sat 6:30-7:30 PM at the Kuhio Beach Hula Mound.



# STREET ACTIVITY

IN AND NEAR WAIKIKI (COURTESY OF THE CITY)

**DUE TO CDC RECOMMENDATION  
ON GATHERINGS AND TO MINIMIZE RISK  
OF EXPOSURE TO COVID-19, ALL EVENTS HAVE BEEN  
CANCELLED.**







## **Introducing our NEW Hawaiian Flatbread Pizza!**

With a twist on the classic Hawaiian pizza, this delicious entree includes a barbeque base sauce with kalua pork and roasted Maui pineapples, topped with green onions and Chicharron (pork rinds).

Available at Dukes Lane Market & Eatery ~ 2255 Kuhio Ave. Honolulu, HI 96815  
Open Daily 6:30 a.m. to 8:30 p.m. ~ (808) 923-5689 ~ [DukesLaneHawaii.com](http://DukesLaneHawaii.com)



# BASALT

## DAILY DRINK *Specials*



### MANHATTAN MONDAY

#### Buffalo Trace Manhattan \$8

Buffalo Trace Kentucky Straight Whiskey,  
Dolin Sweet Vermouth, & bitters. Served either  
up or on the rock



### TEQUILA TUESDAY

#### Starring Don Julio

Silver	\$7	Reposado	\$8
Añejo	\$10	1942	\$18



*A little 'Harmony' for your humpday*

### WHISKEY WEDNESDAY

#### Suntory Hibiki 'Harmony'

#### Japanese Whisky \$8

Neat or with ice sphere



### TIKI THURSDAY

#### Classic Mr. Victor Bergeron \$8

aka Trader Vic's Original Mai Tai  
Circa 1944



# BASALT

## happy hour

3 – 5 PM DAILY \*Bar seating only

### liquor

Well Drink	5
Jig & Bump	7
Short Stella Artois and choice of well shot: Tequila, Vodka, Gin, Bourbon, Fireball, or Jägermeister	

### beer

#### ON TAP

**1554 Black Lager** 6.0% ABV 5  
NEW BELGIUM FORT COLLINS, COLORADO

**Black Butte Porter** 5.2% ABV 5  
DESCHUTES BEND, OREGON

**Stella Artois Lager** 5.2% ABV 5  
LEUVEN, BELGIUM

#### BOTTLES

**Domestic Beer** 3  
Budweiser, Bud Light, or Coors Light

**Imported Beer** 4  
Heineken, Corona, or Sapporo

### wine by the glass

Featured Red, Rosé, White, & Sparkling 5

.....

### Prime Rib Mini Moco 7

Shaved prime rib of beef, red wine demi glace,  
steamed white rice, sunny side up egg

*Items & prices are subject to change*



**bills**  
SYDNEY



**Mahalo Nui  
for your support!**

**AUGUST  
KAMA'ĀINA  
SPECIAL**

**MONDAY - FRIDAY  
25% OFF  
FOOD & DRINKS**

**SATURDAY & SUNDAY  
20% OFF  
FOOD & DRINKS**

**THRU 8/31/20  
with valid local i.d.  
(except specials)**

**KAMA'ĀINA PARKING**

**2 hours free validated  
parking at the bank of  
hawaii building  
(see map at right)**



**bills hawaii**  
**280 beachwalk**  
**2nd level**

**temp. hours:**  
**thurs-mon**  
**8am-2pm**  
**(closed tues/wed)**

**billshawaii.com**  
**808.922.1500**





## HAWAII CONVENTION CENTER IMPLEMENTS COVID-19 HEALTH AND SAFETY PROGRAM

The Hawai'i Convention Center has implemented a comprehensive health and safety program developed by leading venue and event management company ASM Global to ensure the highest levels of health and safety for staff, guests and communities.

In compliance with guidelines established by the Centers for Disease Control (CDC) and the State of Hawai'i Department of Health, these extensive measures include enhanced cleaning and sanitation for high-touch surfaces, the use of personal protective equipment (PPE), modified food and beverage operations, the increased availability of hand sanitizer dispensers, contactless transactions, special signage and social distancing markers.

The Center recently installed thermal scanners at several main entrances. In locations where thermal cameras are not available, temporal thermometers will be used. Anyone displaying a temperature over 100.4 degrees F will be taken to a private area for a secondary temperature screening. Employees or guests confirmed to have a temperature over 100.4 degrees will be evaluated by medical personnel.

The Center is also using VenueShield, ASM Global's proprietary environmental hygiene protocol, which is being deployed at more than 325 facilities worldwide. The VenueShield program offers best practices that include state-of-the-art standard operating procedures for environmental hygiene.

While the Center remains closed to the public, it has continued to welcome volunteers and staff from the Office of Elections for vote counting and Department of Labor and Industrial Relations for unemployment claims processing.






## UPCOMING EVENTS

The Hawai'i Convention Center continues to follow State of Hawai'i restrictions to help prevent the spread of COVID-19, remaining closed since March 18, 2020.

All public events previously scheduled during this time are either postponed or cancelled.

The health and safety of our guests and staff are our top priority, and we will post updates to our events calendar at [HawaiiConvention.com](http://HawaiiConvention.com).



-  @HawaiiConventionCenter
-  @HIConventionCtr
-  @HawaiiConventionCenter

For more on the Center's new health and safety program, visit <https://blog.hawaii-convention.com/reopening-protocols-and-guidelines/>





# Open for Dine-in & Take-Out

**LUNCH 11:00am-4:30pm**

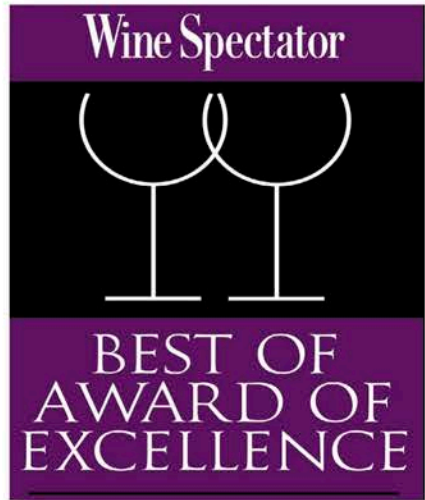
**HAPPY HOUR 12:30-6:30pm**

**DINNER 5:00-9:30pm**



Try Our Amazing Thin-Crust PIZZAS with your meal or To-Go!

*Enjoy our authentic Italian lunch and dinner featuring locally-sourced produce, the highest quality imported ingredients, fresh pasta made in-house daily, and an award-winning wine list. Il Lupino offers our guests the finest dining experience in Waikiki! Indoor or lanai dining available.*



# IL LUPINO

TRATTORIA & WINE BAR

Royal Hawaiian Center  
Bldg B, Level 1  
3 Hours Free Validated Parking

**808.922.3400**

[illupino.com](http://illupino.com)







acai bowl



shave ice



100% kona coffee



cheese & fruit plate



steamed clams



papaya & prosciutto



burrata

# Aloha & Mahalo!

Temp. New Hours

IVC: Daily 6am-10pm  
 IVWB: Mon-Fri 5pm-10pm  
 Sat & Sun 10am-10pm  
 IVSI: Mon-Fri 12pm-9pm  
 Sat 12pm-9pm  
 Sun 9am-9pm

Enjoy our world-famous acai bowls, 100% Kona Coffee drinks, and all our delicious, fresh, farm-to-table food, shave ice, juices, teas, smoothies and so much more. Dine-in or take-out!

**ISLAND VINTAGE COFFEE QUICK TIP**  
 Skip the lines! Call us at 808-926-5662 with your order and we'll have it ready for you to pick up!



wagyu burger



poke bowl



award-winning wine list



poke bites



pork belly



Shop our 100% Kona Coffee, high quality organic & natural products, and popular logo goods - like our beautiful, limited-edition Hydro Flasks®, exclusive to Hawai'i, at our store or online. Gift cards available, too!

Royal Hawaiian Center • Bldg C, Level 2 • 3 hours free parking through 9/30/20

islandvintagecoffee.com • islandvintagewinebar.com •







**NOI**  
THAI  
CUISINE

**3 HOURS  
FREE PARKING**  
**20% OFF  
REGULAR MENU  
FOR KAMA'ĀINA**

# Award-Winning Thai Cuisine

LUNCH 11AM-3PM • HAPPY HOUR 3-6PM • DINNER 5-9PM  
808-664-4039 • noithaicuisine.com • @noithaicuisine\_hawaii

Enjoy award-winning Thai cuisine, a beautiful atmosphere, and friendly service in the heart of Waikiki.



## AUGUST 2020

- \$10 & \$20 Thai Bentos (see below)
- 20% Off Kama'aina Special on Regular Menu (with Hawai'i I.D.)
- Free Pad Thai with \$50 purchase from regular menu
- 3 hours free validated parking with any purchase
- Free delivery in Waikiki and surrounding areas with minimum purchase (available times may vary)
- No room charge for private room with minimum purchase.
- Catering specials also available. Please call to inquire.
- Indoor and outdoor seating available.

## \$20 TO-GO BENTOS

Our take-out bentos were so popular we decided to keep them on the menu!

We also have 14 different \$10 to-go bentos, too! Just call us for menu or order at noithaicuisine.com.



- #1 - Crispy Garlic Chicken  
Pad Thai
  - #2 - Cashew Chicken  
Thai Basil Stir-Fry (chicken, pork or tofu)
  - #3 - Green Beans (chicken, pork or tofu)  
Eggplant (chicken, pork or tofu)
  - #4 - Eggplant Tofu  
Vegetarian Pad Thai
- \$20 Bentos come with Spring Rolls & Jasmine Rice.

Royal Hawaiian Center • Building C, Level 3 • Validated Parking  
Private Rooms • Events • Catering • Gift Cards



# Ka Lei Hula

## FREE Hula Classes!

Every Sunday in August!

9am-10am

Waikiki Beach Walk® Plaza

227 Lewers Street

Free 3 Hour Valet Parking:  
Embassy Suites Porte  
Cochere, 201 Beach Walk

To RSVP, register at  
Eventbrite or scan QR





## LUXE LUGGAGE BRAND RIMOWA NOW OPEN AT ROYAL HAWAIIAN CENTER



Luxury luggage maker RIMOWA's new two-story boutique is now open on the first and second levels of Building C! At nearly 2,250 square feet, it is the brand's largest store in Hawai'i.

RIMOWA is a welcomed addition to the collection of luxury retailers at Royal Hawaiian Center. As one of the world's most innovative names in luggage and travel accessories, it's an ideal addition to the Center's selection of luxury merchants. We're eager to introduce this coveted brand to both long-time fans and new admirers.

A private traditional Hawaiian blessing for RIMOWA boutique employees, Center executives and other partners was held on July 22 with Kahu Kelekona Bishaw. A grand opening celebration is also being planned for a future date.

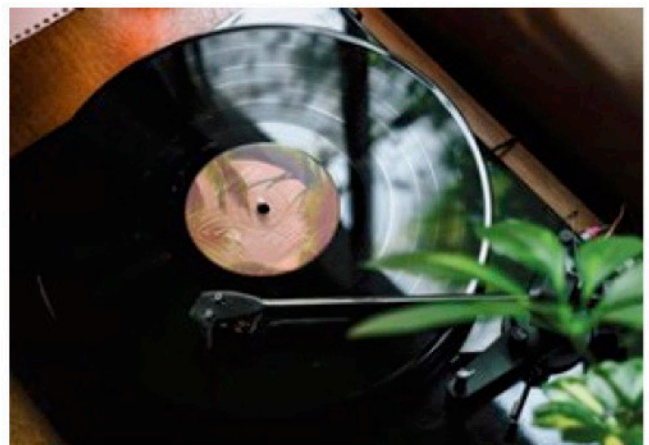


Rimowa

This expansive space, showcases RIMOWA's signature luggage collections – the RIMOWA Original, RIMOWA Classic, RIMOWA Essential, and RIMOWA Hybrid – and will be featuring new exciting launches in the coming months.



Listen to the sounds of a Hawaiian summer with **R Magazine's On Royal Repeat playlist**. Let the voices of local legends including Bobby Ingano, Typical Hawaiians, Israel Kamakawiwo'ole whisk you away to the shores of Waikiki, while the sunny songs from Harry Styles, Childish Gambino, and Rusted Root keep you and your slippers dancing down the beach all day. [bit.ly/OnRoyalRepeat](https://bit.ly/OnRoyalRepeat)





# REDISCOVER WAIKĪKĪ THIS SUMMER WITH ROYAL HAWAIIAN CENTER

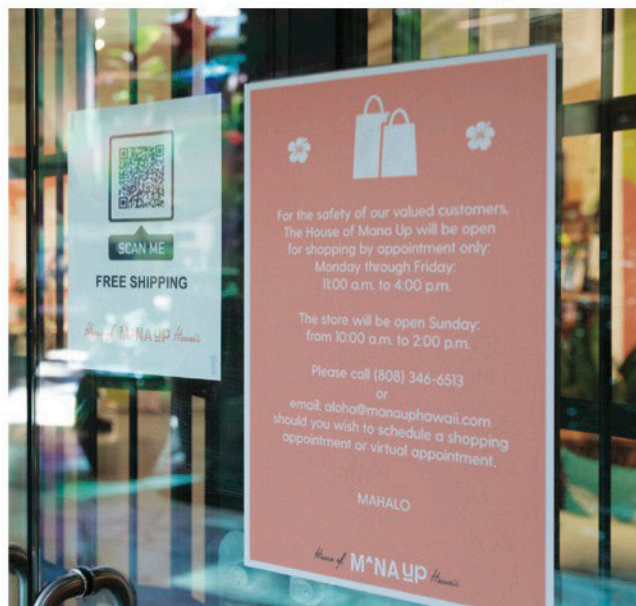


## NEXT LEVEL WINDOW SHOPPING

House of Mana Up (Building A, Level 1) is giving a whole new meaning to the phrase “window shopping.” Leveraging the popularity of digital platforms, guests can shop their favorite island products, giftables, and apparel without even stepping into the store. Customers simply scan the QR code in the store window to place their order and make a payment, then store employees will package up the items and deliver it to the door. Creative, convenient and safe!

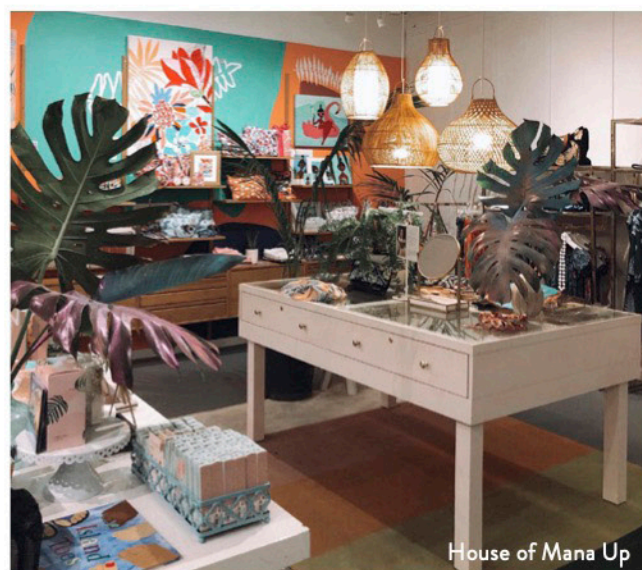


House of Mana Up



## FREE PARKING EXTENDED THROUGH SEPTEMBER 30

By popular demand, Royal Hawaiian Center has extended its 3-free hours of validated parking with any purchase through September 30! That’s two more months to shop, dine, and stroll through the Center and rediscover Waikīkī. Two more months to enjoy a bento before heading to the beach or to grab a pau hana cocktail at sunset. Eight more weeks to get a new swimsuit, update your summer wardrobe, or stock up on the latest fashion accessories. Sixty additional days to treat the family to sweet treats at the Pa’ina Lanai (Building B, Level 2) after an afternoon in the sun. All without paying for parking!



House of Mana Up







# TANAKA of TOKYO

## JAPANESE STEAK & SEAFOOD



“Hawaii’s Best Japanese Teppanyaki Steakhouse”

- Honolulu Star Advertiser -

“Best Japanese Restaurant in Hawaii”

- Honolulu Magazine -

“The Best Teppan Room Anywhere”

- Zagat Guide -

“The Best Kids Menu in American Contest Winner”

- Restaurant Hospitality Magazine -

“One of the 10 Best Japanese Restaurants in the U.S.”

- Five Star Diamond Award -

*“Customer safety is our number one priority and our team is continuously working hard to ensure that all Restaurant Reopening Guidelines established by the City and County of Honolulu are being followed meticulously! Additionally, we are excited to share that Tanaka of Tokyo is one of the safest restaurants to dine in due to our extensive ventilation system which exhausts and exchanges dining room air every 2 minutes – almost as good as dining outside!!! The power of our exhaust fans with ducts above each cooking station provides a combined 27,000 CFM of exhaust air while fresh air is being drawn in at a rate 15 times more than Department of Health Standards!”*

Take-out 12:00 p.m. Dinner 5:00 p.m.

Ala Moana Center, Upper Level 4,

Ho’okipa Terrace

Tel 945-3443

[www.tanakaoftokyo.com](http://www.tanakaoftokyo.com)





DINE-IN OR TAKE-OUT  
3 HOURS of FREE PARKING!



# WOLFGANG'S

S T E A K H O U S E

BY WOLFGANG ZWIENER

    
@wolfgangswaikiki



LUNCH SPECIALS STILL ONLY \$12.95



loco moco bento \$15.95



loco moco bento \$15.95



salmon bento \$18.95



Wolfgang's Steakhouse by Wolfgang Zwiener continues to offer our legendary USDA Prime steaks, fresh seafood, and a delicious array of soups, salads, sandwiches, sides and decadent desserts for dine-in or take-out. And try our new to-go bentos at a great price point. And yes, we still have our popular \$12.95 lunch specials! We are so grateful for your patronage throughout the year, and especially during these challenging times. Mahalo nui loa from all of the Wolfgang's Steakhouse 'ohana. We look forward to serving you soon!

**WE ARE CURRENTLY UNDER RENOVATION AND TEMPORARILY LOCATED AT:**

IL LUPINO TRATTORIA & WINE BAR • OPEN DAILY 11:00AM - 10:00PM

Royal Hawaiian Center • Bldg B, Level 1 • wolfgangsteakhouse.net

**808.922.3600 • opentable.com**





Reopening Rates:

# \$5 & \$10 FLAT RATES

Available Daily

## \$5 & \$10 FLAT RATES:

Available in the Waikiki Business Plaza & Waikiki Shopping Plaza.

### \$5 FLAT RATE:

Park for up to 5 hours during parking lot operating hours for only \$5.

### \$10 FLAT RATE:

Park for up to 10 hours during parking lot operating hours for only \$10.

Valid during parking lot operating hours: [waikikishoppingplaza.com/parking](http://waikikishoppingplaza.com/parking)

\$3.00 per half hour before and after flat rate, no validations can be applied.

No overnight parking. Cars left in the lot after closing are subject to tow.



W A I K I K I  
BUSINESS  
P L A Z A

WIKIWIKI WIRE

the  
Waikiki  
SHOPPING PLAZA



Optimize Customer Counts for Waikiki Businesses



Libby Warring  
Yelp Head Office



Doug Harris, CEO  
Harris Hawaii Marketing Group

Get your complimentary customized  
**Yelp and Digital Profile Evaluation**  
from the experts

Contact Jana at [janas@harris-agency.com](mailto:janas@harris-agency.com) / (808) 946-4525  
to schedule your appointment



Marketing & Communications  
Agency



FOOD GURUS

Food & Beverage  
Marketing Specialists



Digital Optimization







# WAIKĪKĪ IMPROVEMENT ASSOCIATION

---

## *Wikiwiki Wire* **GUIDELINES**

Wikiwiki Wire is published on the first Friday of each month. If you would like to share your news with other members, please send your info to: [editor@waikikiimprovement.com](mailto:editor@waikikiimprovement.com).

### **Submission Deadline**

Waikīkī-related news and information submitted by members (or their PR agencies) for the Wikiwiki Wire newsletter should be received no later than **5 PM THURSDAY, ONE WEEK PRIOR** to the newsletter's publication and distribution on the first Friday of each month.

**News & Stories:** Please submit any Waikīkī-related stories/articles as a Word doc and include photos to accompany stories/ articles. For best results, please upload photos as a separate JPEG attachment - maximum 2 MB each image.

**Flyers/PDFs:** Waikīkī-related flyers are welcome but must look like advertising flyers and not press releases. Please format flyers to an 8.5" x 11" size and submit them in a PDF format.

**Press Releases:** Please submit Waikīkī-related press releases as a Word doc. Press Releases that do not fit within one page of the Wikiwiki Wire newsletter will be returned for editing.

**Photos:** For best results, please upload photos as a separate JPEG attachment - maximum 2 MB each image.





# WAIKĪKĪ IMPROVEMENT ASSOCIATION

We are a cross-section of business, government and the community; our members care about the future of this special place - Waikīkī.

For more than 40 years, the Waikiki Improvement Association has remained true to its objective: to improve, enrich and beautify Waikīkī for the benefit of residents and visitors alike and to promote conditions conducive to the economic and cultural good and for the betterment of the entire community.

## HAWAIIAN DIACRITICAL MARKS

Waikīkī Improvement Association recognizes the use of diacritical marks (i.e., glottal stop (ʻ), macron (ā) in place names of Hawaiʻi, such as Waikīkī and Kalākaua Avenue and will include them whenever possible. We also respect the individual use (or not) of these markings for names of organizations and businesses.

There will also be times when we may not have a chance to add or change the markings in all of the articles submitted and when that happens, e kala mai.